

TIME-TABLE FOR PROGRESS

YOUR SOCIAL CREDIT GOVERNMENT'S MANIFESTO

Sept 1966

**FOR THE NEXT
7 DYNAMIC YEARS**



KEEP B.C. MOVING AHEAD!

FOR RESEARCH PURPOSES ONLY
NOT TO BE REPRODUCED WITHOUT PERMISSION
Rare Books & Special Collections and University Archive
The University of British Columbia

A MESSAGE FROM THE PREMIER TO THE PEOPLE OF BRITISH COLUMBIA

My Fellow Citizens:

In asking your support for the Social Credit team in the September 12 election, I am deeply aware of my own responsibility to you and also that of the Government I lead. Simply stated, that responsibility is to seek at all appropriate times your approval of the programmes and policies we undertake on your behalf. Under the parliamentary system, it is the duty of a Government to govern; but it is also the duty of a Government to refer its past actions and future plans directly to the people when a turning-point is reached in the affairs of the Province.

1966 is one such turning-point, because it marks the end of the second seven-year period during which you have entrusted the management of British Columbia's affairs to your Social Credit Government. For each of those periods, your Government has followed a carefully-prepared plan of development to bring the Province out of its post-war rut and into the forefront of North American progress.

During the seven years beginning in 1952, your Government attacked on all fronts the isolation of poor communications which had stifled our progress for so long. By building thousands of miles of highways and hundreds of bridges and tunnels, by modernizing the Pacific Great Eastern Railway and extending it north and south; by planning and establishing the coastal ferry system which has now become the largest in the free world; and by doing all this within the framework of pay-as-you-go financing, we were able to provide for our people a vital and basic tool for development of the economy in every part of the Province.

While continuing and broadening these efforts, we began in 1959 to focus our attention on a second seven-year programme: the development of basic energies and a strong industrial base for British Columbia's growth.

The benefits of public power at lower rates; the massive hydro projects on the Peace and Columbia rivers; the development of policies which have seen the expenditure of hundreds of millions of dollars by the pulp and paper industry; the stimulation of mining and the production of steel; improvement in rural life—these and dozens of other developments in dozens of other fields have broadened our economic base, created vast new payrolls and provided new employment opportunities.

Hand in hand with these basic programmes, there has gone a constant improvement in your Government's programmes for people. Under Social Credit administration British Columbia has consistently led the nation in benefits to the individual citizen: in hospital insurance coverage, in payments to old age pensioners, in the level of social assistance rates and now in medicare. New hospitals, new schools, new vocational institutions, new junior colleges and new universities are building everywhere.

Now we are on the threshold of another new era in the dynamic progress of our Province, an era which will see the greatest urban and rural development of our 100 years of history. To meet the requirements of this dynamic period, your Government has already put major new plans into force. We have pioneered in the creation

of "instant municipalities". The Provincial homeowner grant, which began at \$28 per year, is now \$110 a year, and it will grow to \$200 within the next seven-year period. This grant system was pioneered by the Social Credit Government of British Columbia; it has kept our home and farm taxes the lowest in all of Canada.

This year, your Government further anticipated the urban revolution by introducing the Strata Titles Act. This important legislation makes possible outright ownership of individual apartments; at a time when the pressures on available single-family building sites are increasing, all the rights and privileges of home ownership are therefore extended to the apartment dweller—and these rights include the right to the homeowner grant.

Recently, I announced another pioneering measure for social progress—probably the most important of its kind ever undertaken by the Social Credit Government. This is the home purchase plan, under which your Government will make substantial non-repayable contributions towards the down payment on this largest single purchase of any family's life. I believe it is impossible to over-emphasize the significance of this home purchase and building plan to the family unit, which is our greatest strength.

The Social Credit administration has endeavoured at all times to deal fairly with the financial requirements of municipalities. We have endeavoured also to give leadership and assistance in the construction of major traffic arteries, in urban renewal, pollution control, assistance to education and social and recreational programmes. We stand ready to extend and increase that assistance.

In carrying out the seven-year programmes of the past and planning the seven-year programme of the immediate future, your Social Credit Government has sought constantly to give true non-partisan service to all the people of British Columbia—service with special privileges to none and fair treatment for all. We believe deeply and sincerely that good government for British Columbia cannot be provided within the framework of allegiance to old-line and socialist parties which has so completely paralyzed the progress of Canada at the national level. It is a source of pride to me as your Premier, and an example of the non-partisan spirit in action, that there are in my own Cabinet former Liberals, former Conservatives and former supporters of the CCF party. These men, together with other members on the Government benches and many thousands of private citizens, have set aside partisan federal party loyalties to work in unity and strength for a better British Columbia.

It is in this non-partisan spirit that I ask your support of all Social Credit Government candidates in the forthcoming General Election. I am confident that having considered the record of the past, the attainments of the present and the aspirations of the future, you will once again grant us your mandate to keep British Columbia moving ahead on September 12th.



W. A. C. Bennett,
Premier of British Columbia.

FOR THE NEXT 7 DYNAMIC YEARS

- * STABILITY
- * PROGRESSIVE POLICIES
- * DYNAMIC GROWTH



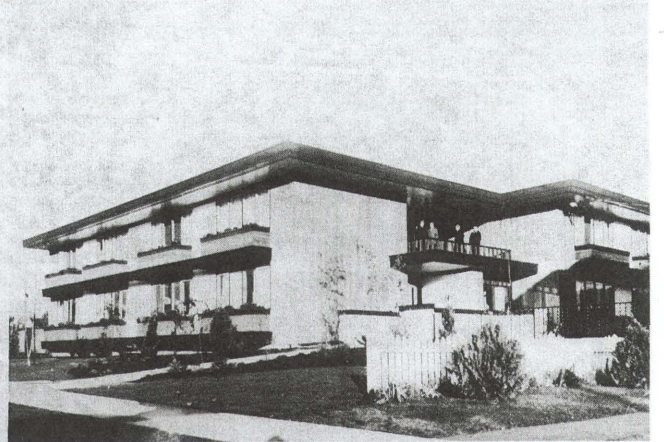
34%

increase in total school enrollment provided for in next 7 years.



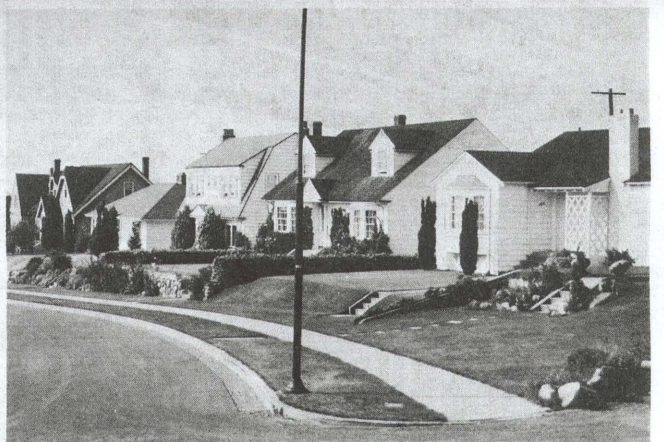
59%

increase in hospital beds provided in next 7 years.



70%

increase in health and welfare expenditures in next 7 years.

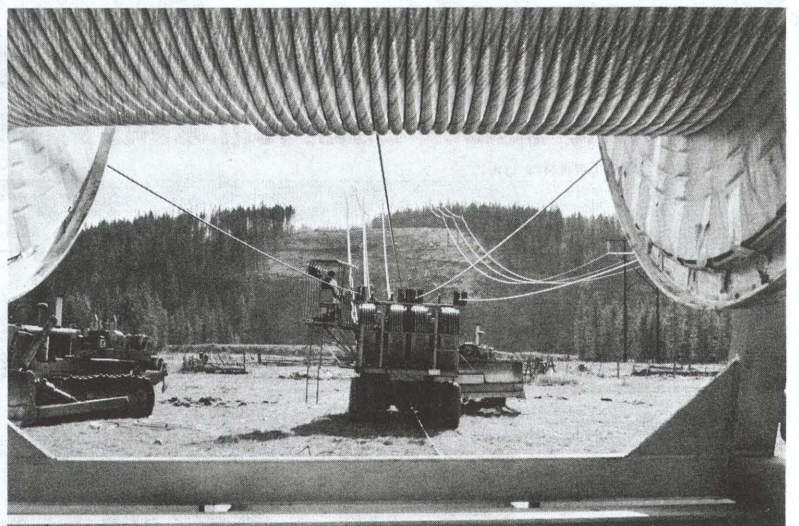


82%

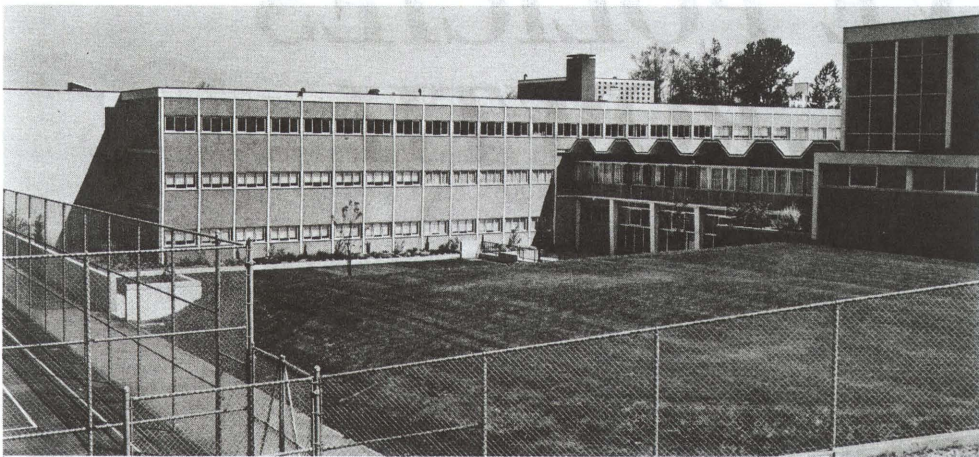
increase in Homeowner's Grant in next 7 years.

79%

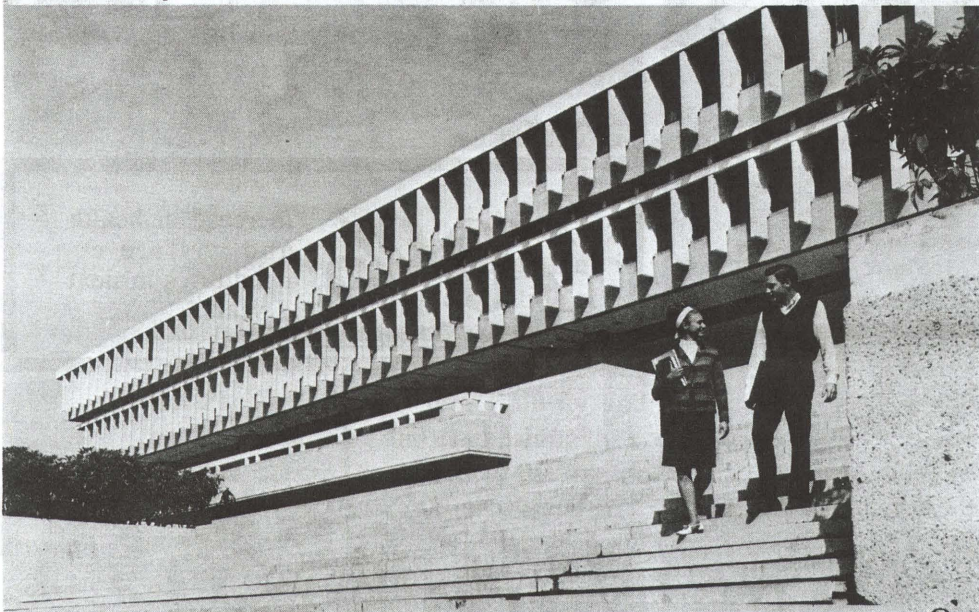
increase in electric power generated in next 7 years.



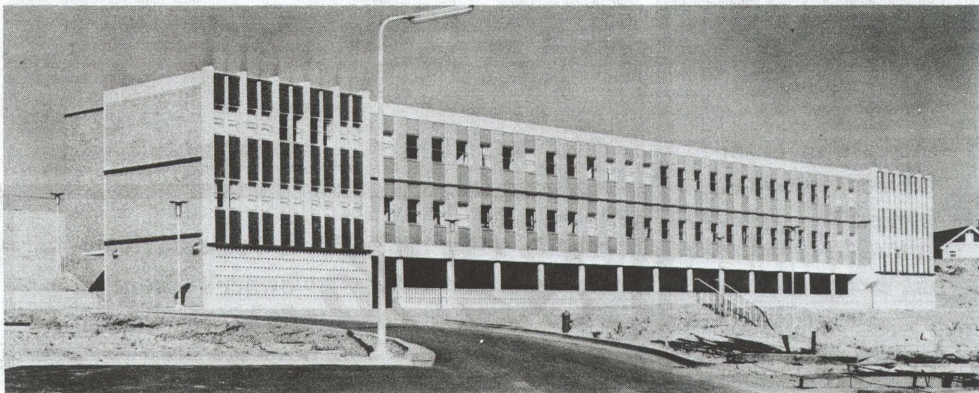
To keep B.C. *M* *EDUCATION ... C*



New Secondary School in Vancouver.



Students at Simon Fraser University.



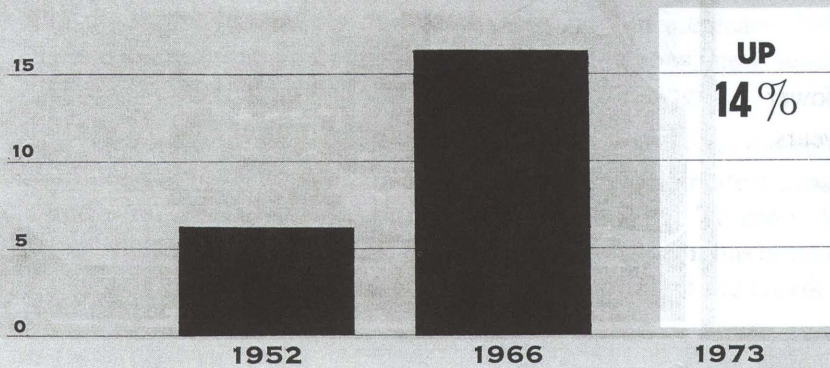
Jericho Hill School.

To ensure the future of British Columbia's young people, your Social Credit Government is spending 27% of its budget on Education and on the improvement and expansion of educational facilities throughout the Province. The results can be seen everywhere. New classrooms are rising at an unprecedented rate. **More than 2500 additional rooms will be built by 1970 at a cost of over \$100,000,000 — greater than any previous four-year period!** In its 14 years in office, your Government has spent close to \$300,000,000 on classrooms and related facilities. No other Provincial Government in Canada assists school districts in construction programmes to such a degree . . . and no other Province has a more highly qualified force of teachers or a more aggressive teacher recruitment and training programme.

British Columbia also leads in **higher education**. Look at the world-wide attention paid to the fabulous Simon Fraser University, and the overwhelming success of the B.C. Institute of Technology, which will soon be doubled in capacity to cope with the increasing demand for trained technicians. **The next seven years will see the construction of two new universities in the Province**, bringing increasing opportunity for higher education to B.C.'s fastest growing regions. **It will see further expansion of the University of British Columbia and the University of Victoria, the completion of new regional colleges, new technical and vocational schools, and new facilities for the retraining of adults** so that they can find better jobs and greater security for themselves and their families.

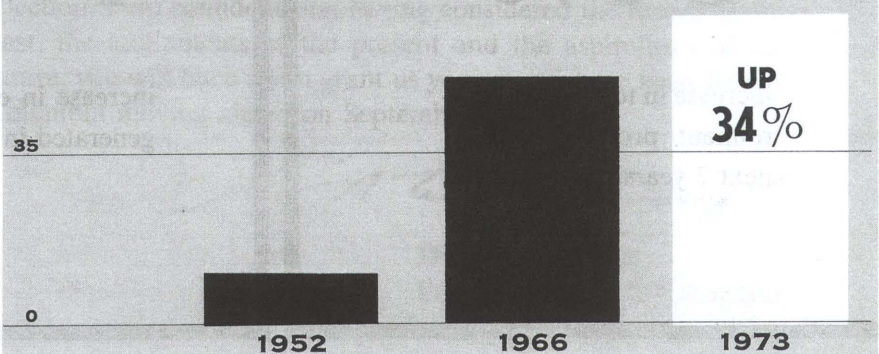
Public School Classroom Units

20 THOUSAND UNITS



VOCATIONAL SCHOOL ENROLMENT

70 THOUSAND STUDENTS



Moving Ahead

OPPORTUNITY FOR ALL

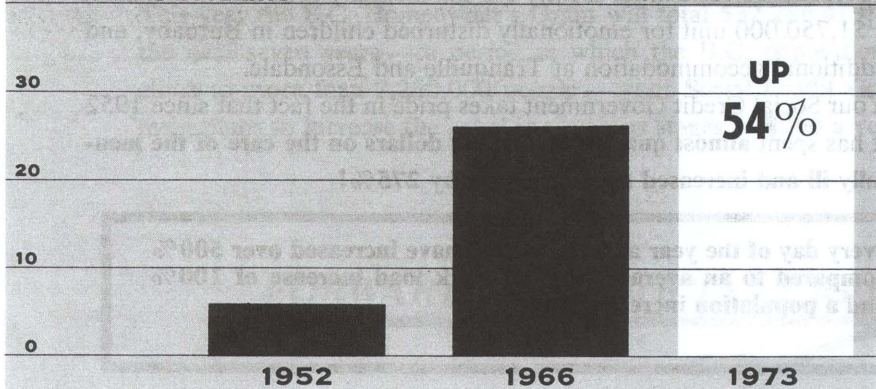
Through its leadership in education, your Social Credit Government has substantially enlarged the opportunities for the advancement of every young man and woman. Since 1952, the Government's aid to universities has risen by a dramatic 1,340% and is increasing every year. Government-sponsored scholarships and bursaries now total over \$1 million annually, and the Province is the only one in Canada in which the Government pays part of the fees of those students with superior marks. These measures guarantee to every deserving student in British Columbia the opportunity to further his education. They are evidence that **when it comes to progress in education British Columbia stands second to none!**

Your Social Credit Government believes that every child, regardless of his mental or physical capacity, is entitled to the finest possible education. For this reason, your Government has given its full support to the education and rehabilitation of the handicapped at all age levels. New facilities are being built for the mentally retarded. The Jericho Hill School for the deaf and blind in Vancouver has been acclaimed as **the finest school of its kind in North America**. The full cost of this school — board, lodging, and tuition — is borne by your Government. Excellent progress is also being made in the training and rehabilitation of handicapped adults. Expenditures in all these endeavours will be increased in the next seven dynamic years.

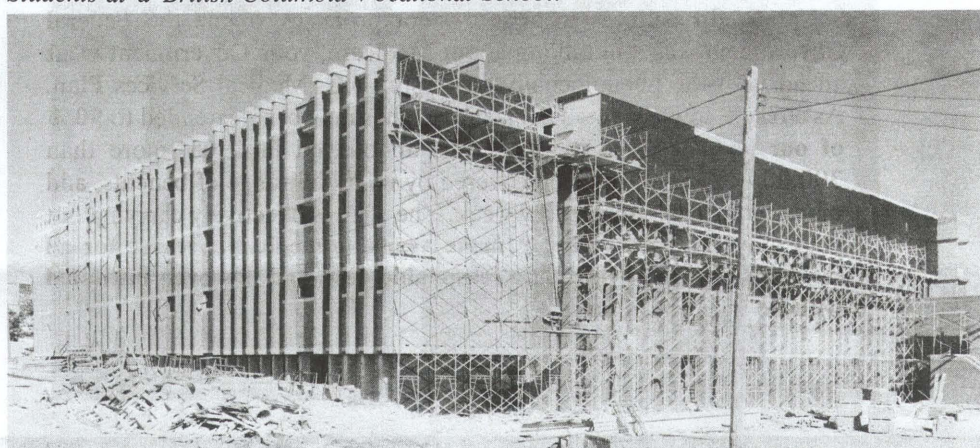
FORWARD WITH SOCIAL CREDIT

UNIVERSITY ENROLMENT

40 THOUSAND STUDENTS



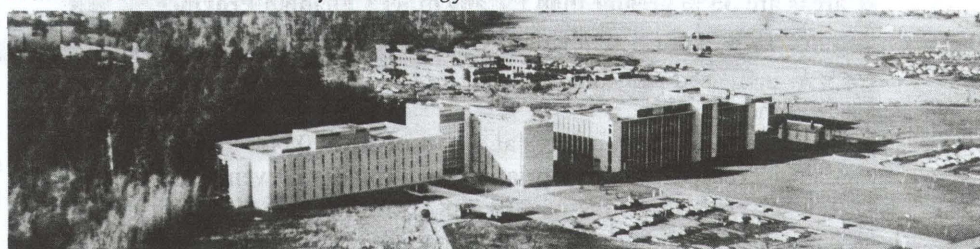
Students at a British Columbia Vocational School.



University of British Columbia—Forestry-Agriculture Building.



British Columbia Institute of Technology.



University of Victoria.

Students at a new public school.



To keep B.C. Moving Ahead

INCREASED SECURITY...A S

SECURITY

THE HIGHEST STANDARDS OF HOSPITAL CARE

Your Social Credit Government has under way a hospital construction programme **without equal anywhere in Canada**. More than a dozen major projects are now under way which will add more than 650 beds to the 6,750 new beds already provided at a total cost of more than \$95,000,000. Other projects involving 1,878 beds are in advanced planning and many other projects in all parts of the Province are in preliminary planning stages.

ANOTHER GREAT STEP FORWARD — B.C. MEDICAL SERVICES PLAN

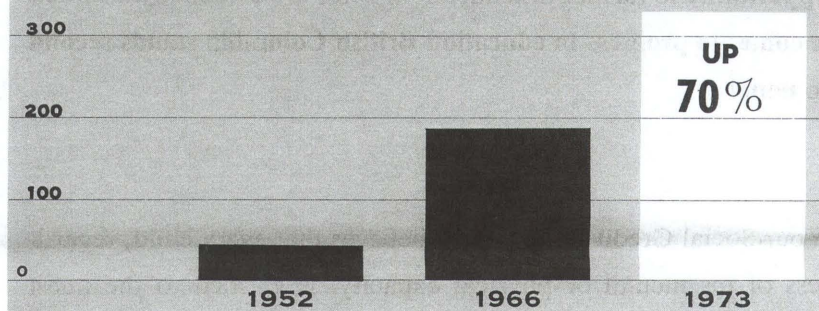
Social Credit believes in **action** — not promises. While the Federal Government was still talking about Medicare, your Government went ahead with the phenomenally successful B.C. Medical Services Plan. As a result, low-cost medical insurance has now been extended to **90% of our people**. Since the Plan was announced in 1965, more than 300,000 citizens have been covered by its broad range of benefits, and many more are joining every week. The Plan is effectively carrying out your Government's policy to **make available medical coverage for all residents of the Province at a reasonable cost, and has been instituted with no increase in taxes.**

MODERN HOUSING FOR SENIOR CITIZENS

Under the Elderly Citizens Housing Aid Act, your Social Credit Government has cooperated with more than 100 municipalities in providing over 5,000 senior citizens with modern low-rental accommodation. The Government has already contributed close to \$6,500,000 toward these housing units and expenditures this year will reach a record level.

HEALTH & WELFARE Expenditures

MILLIONS OF DOLLARS



HEALTH AND WELFARE

Health and welfare services account for the largest share of your Social Credit Government's annual budget. The Government's emphasis on better health and security for every man, woman, and child can be read in the fact that British Columbia's per capita expenditures in these areas are **35% greater than for any other Canadian Province.**

Since 1952, your Social Credit Government has

- ★ increased pensions and welfare allowances to the highest level in the nation
- ★ built 76 health centres at a cost of \$4,380,000
- ★ increased the appropriation for sickness prevention by 51%
- ★ given cash grants of \$12,788,000 to voluntary health agencies
- ★ brought home care and rehabilitation services to 1,537,850 people in 99 communities
- ★ developed community dental programmes that have benefited thousands of children
- ★ installed the most comprehensive and advanced health services programme on the continent
- ★ passed a new Mental Health Act that has been acclaimed as the most progressive legislation of its kind in Canada.

Since 1952, the **B.C. Hospital Insurance Service** has made payments of more than \$660,000,000 on behalf of hospital patients. This year expenditures will exceed \$90,000,000. Payments to hospitals throughout the Province **exceed \$235,000 each and**

In Mental Health Services giant strides have been made in the treatment of patients and the training of staff. As one result the Riverview Hospital at Essondale is the only mental hospital in Canada fully accredited by the American Psychiatric Association. Regional mental clinics have been established in Burnaby, Victoria, Nanaimo, Kelowna and Trail, and two new clinics will soon be in operation in Prince George and Chilliwack. Additional facilities and service are now in the planning stage for Kamloops and the East Kootenay area. Travelling clinics visit many other communities. Work is under way on a \$5,500,000 intensive treatment psychiatric hospital in Victoria. Other major projects are a \$3,500,000 medical clinic at Essondale, a \$10,000,000 residential facility for the mentally retarded in Saanich, a \$1,750,000 unit for emotionally disturbed children in Burnaby, and additional accommodation at Tranquille and Essondale.

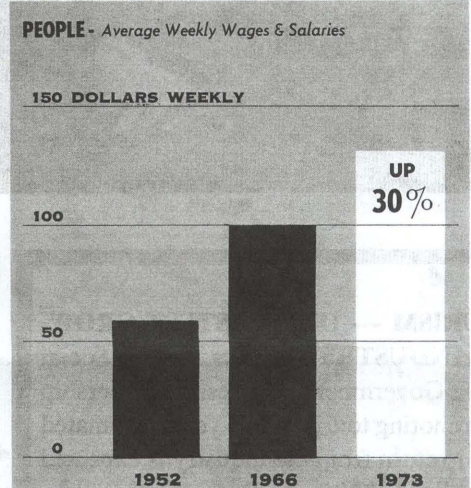
Your Social Credit Government takes pride in the fact that since 1952 it has spent **almost quarter of a billion dollars on the care of the mentally ill and increased appropriations by 275%!**

every day of the year and since 1952 have increased over 500% compared to an average hospital work load increase of 100% and a population increase of 65%.

SOLID FUTURE FOR ALL

PEOPLE

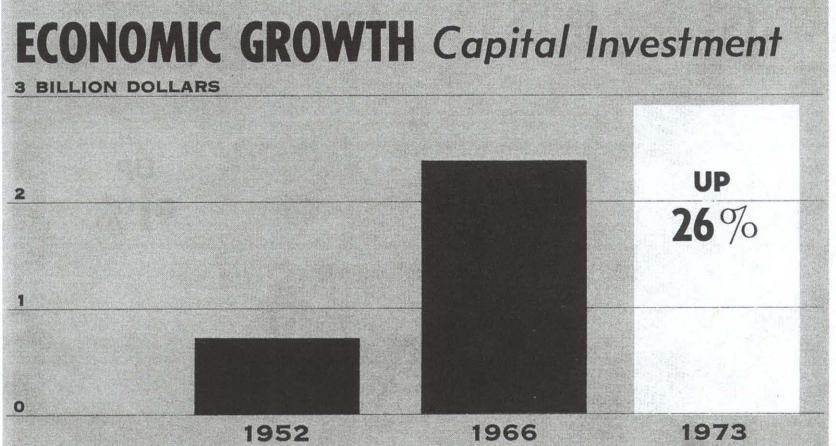
The rising tide of economic development in British Columbia has benefited every wage earner. The number of jobs has grown from 447,000 in 1952 to more than 679,000 today. In 1965, the growth in income exceeded the average yearly rate over the previous 12 years and is continuing to climb. **Today, the people of this Province enjoy the highest per-capita income of any province in Canada.** Working and living conditions for this growing labour force have been improved tremendously over the standards of 14 years ago. During your Government's dynamic administration there has been both a steady reduction in working hours and a steady increase in take-home pay — all this with continued improvement in working conditions! The Workmen's Compensation Act has been amended four times to provide increased benefits and greater coverage, and a new Factories Act was passed to provide greater protection for working men and women by improving conditions and enforcing safety regulations.



BENEFITS TO HOMEOWNERS

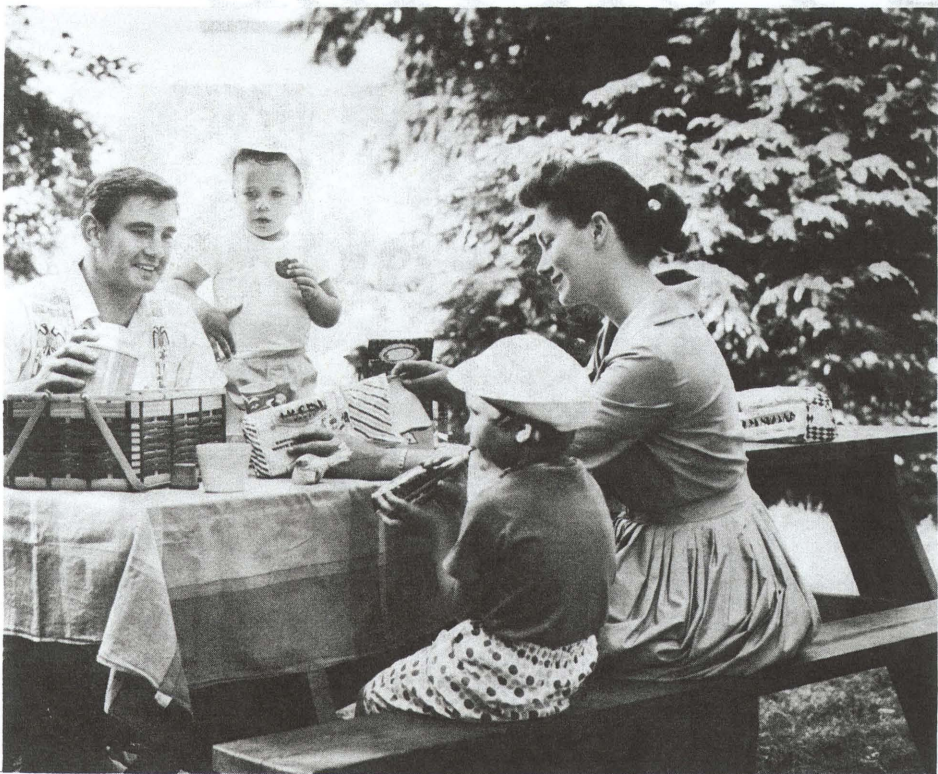
It's no wonder British Columbia's population growth is double the national rate! Where else will you find a Government that already pays \$110 a year towards the taxes of every qualified homeowner in the Province? Where else will you find a Government that plans to make outright grants to enable families now renting and young couples starting out in life together to own their own homes and in turn benefit from the Homeowner's Grant as well? These measures are stamped with your Social Credit Government's belief that a Province's prosperity belongs to the people and should be shared by the people. **A \$25,000,000 fund will be established to support the \$500 Home Purchase and Construction grants, which will be increased by \$25 annually through the next 7 years.**

This year the B.C. Homeowner's Grant will total \$32,286,419! Over the next seven years — a period in which the B.C. population will climb to more than 2,250,000 people — your Social Credit Government plans to **increase the grant in generous stages to \$200 a year!**



FORWARD WITH SOCIAL CREDIT

RECREATION AND CONSERVATION



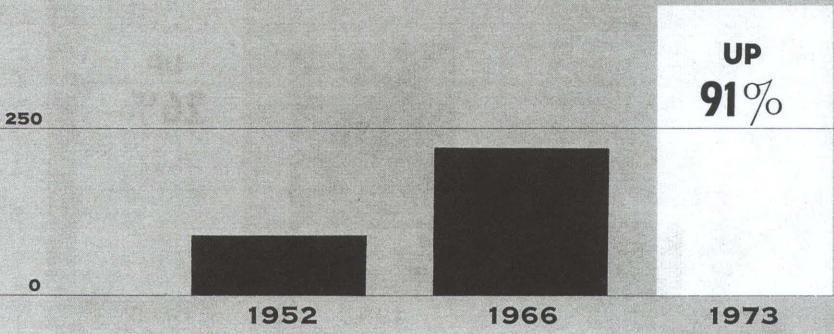
TOURISM — OUR FASTEST-GROWING INDUSTRY: Thanks to your Social Credit Government's aggressive leadership in promoting tourism, this year's estimated dollar return from the industry is expected to exceed \$225 million — more than double the amount in 1960! Within the next seven years — attracted by the fine roads, ferries, and parks system developed by your Government — it is expected to climb to over \$400 million, with corresponding benefits to every segment of the economy.

Fourteen years ago there were only 62 Provincial Parks in British Columbia. Today there are over 240 plus over 4,000 camping units throughout the Province. No other area in the world has seen such progressive steps as those taken by your Social Credit Government to establish parks and campsites on such a scale. In addition the Department of Recreation and Conservation — the first such department formed by any Provincial Government

in Canada — has developed special marine parks for British Columbia's growing legion of boatowners, and has restored and maintained sites of historic significance. **Future plans include the addition of over 100 new parks, 2,000 additional camping units, road access to more than 100 lakes, and the expansion of your Social Credit Government's widely acclaimed programme for the preservation of every major natural feature in the Province.**

TOURIST BUSINESS

500 MILLION DOLLARS



Peace River Project — Portage Mountain Dam

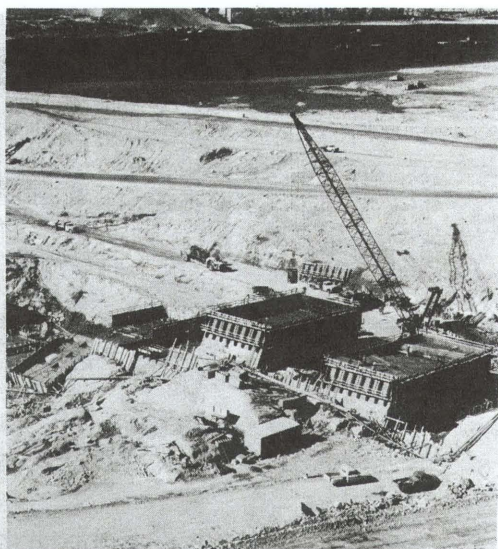
*From your Social Credit Government
Hydro Power Development*

** BETTER
* FASTER
* GREATER*

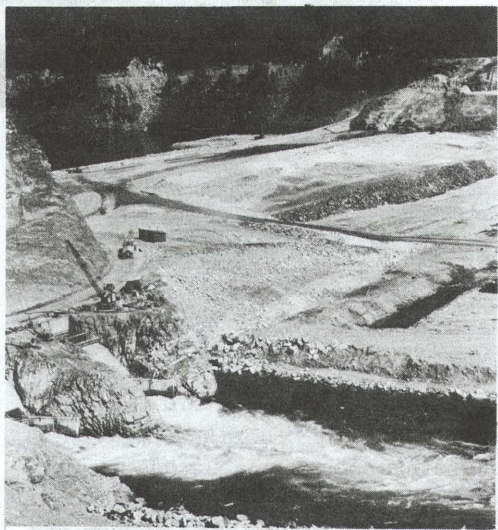
The eyes of the world are on the development by your Social Credit Government of two of the most massive hydro-electric power developments ever undertaken — the Peace and the Columbia. From these projects will come impetus for an industrial expansion beyond any we have ever seen — dwarfing even those great and prosperous years that have placed this Province alongside California and Florida



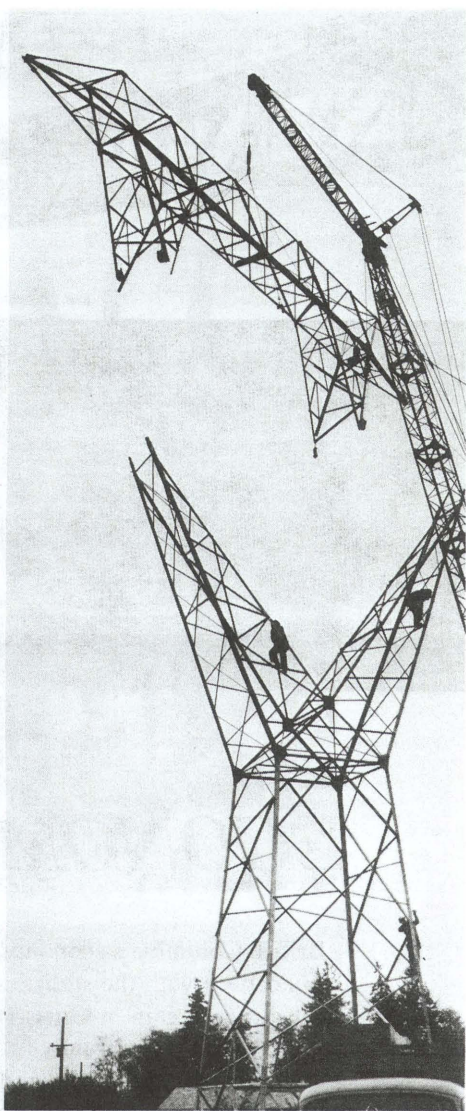
Columbia River Project — Mica Townsite



Arrow Dam



Duncan Dam

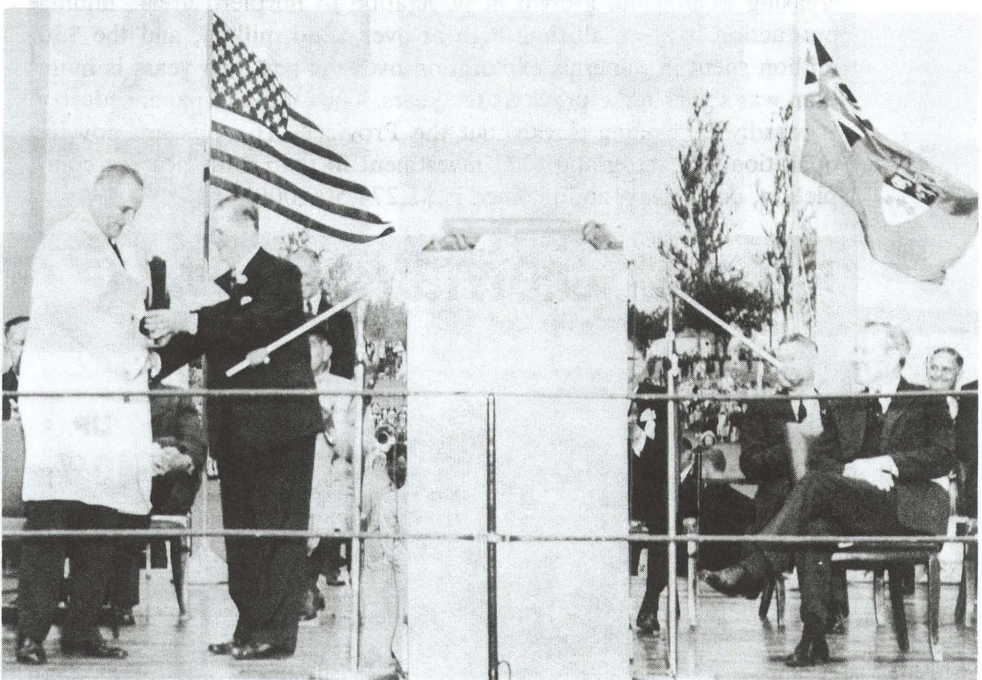


New Power Transmission Grid

lit Government's nents JOBS EXPANSION PROSPERITY

as the three fastest growing regions on the continent. This growth has brought about a rapidly expanding demand for electric power. Consumption last year was **up 15.8% over the previous year**. In step with this growth, your Government has reduced rates to consumers and cumulative savings will total \$82,000,000 by the end of the present fiscal year.

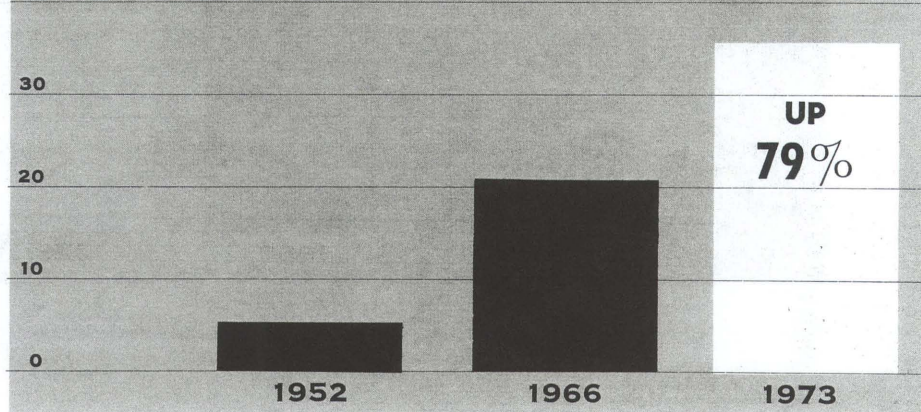
FORWARD WITH SOCIAL CREDIT

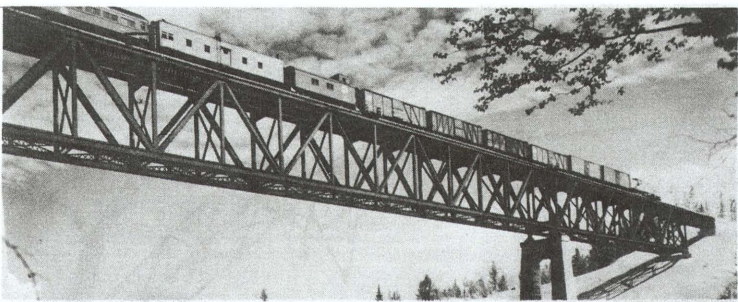


SEPTEMBER 16, 1964 — President Lyndon B. Johnson, Premier W. A. C. Bennett, and Prime Minister Lester B. Pearson. This ceremony and receipt by B.C. Hydro of a cheque for \$273,291,661.24 marked formal proclamation of the Columbia River Treaty.

PUBLIC POWER Electric Power Generation

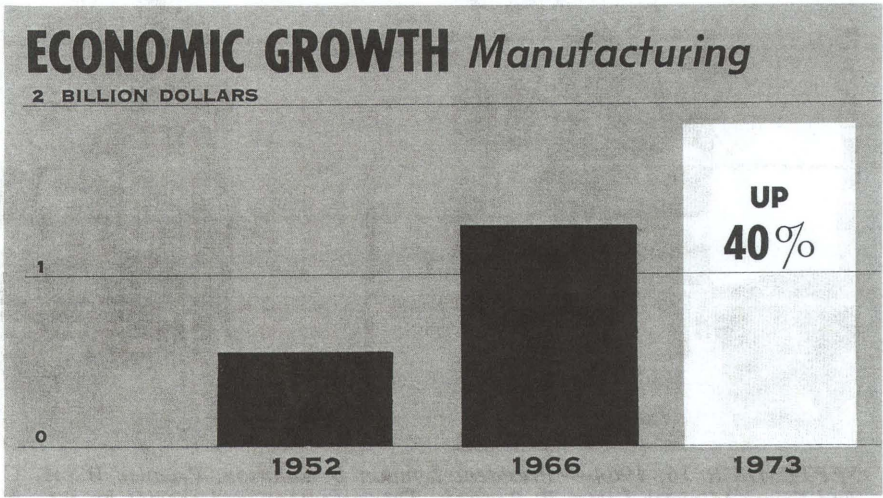
40 BILLION KILLOWATT HOURS





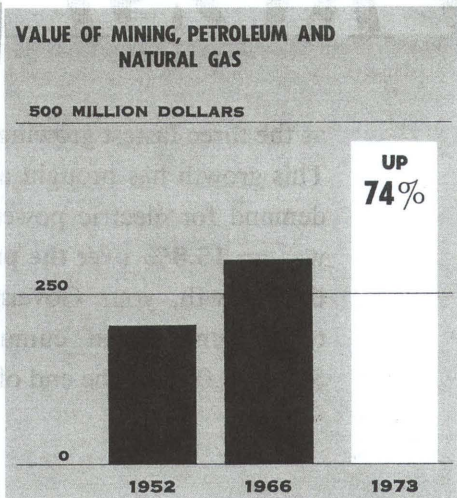
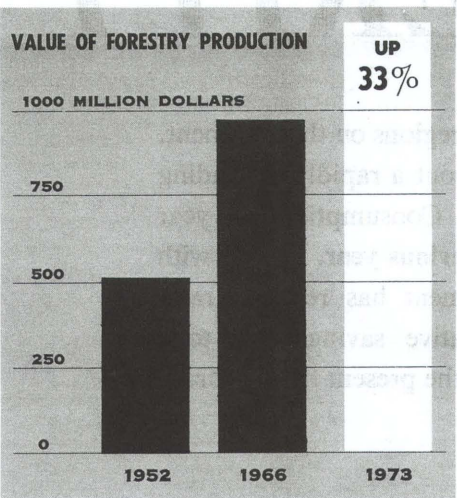
ECONOMIC GROWTH

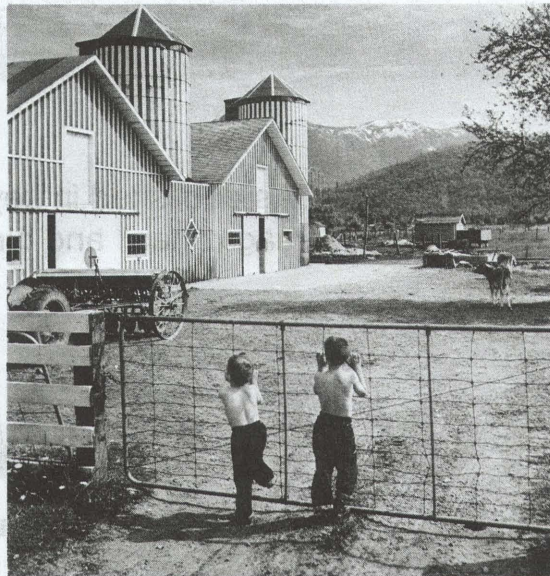
British Columbia's economy is growing so fast it hardly seems possible to keep up with the statistics! Last year was the fifth year in a row to see a record gain in Gross Provincial Product — now more than \$5.5 billion. There is virtually full employment, per capita personal income is the highest in Canada and totals more than \$4 billion, exports total more than \$1.6 billion, new gas and oil discoveries have brought increasing wealth and growth in population to northern areas, mining production is at an all-time high at over \$280 million, and the \$30 million spent in minerals exploration over the past two years is more than was spent in the previous ten years. The pulp and paper industry is rapidly expanding throughout the Province; 16 mills are now in operation and the grand total investment in pulp mills nearing completion, under way, and planned is \$1,274,500,000!



RESOURCES

The management of British Columbia's vast natural resources for the benefit of everyone in the Province is the cornerstone of your Government's policy. It is the basis for the far-sighted two-river hydro development programme, the operation of the immensely important Pacific Great Eastern Railway, the protection of our forest industry through sustained yield, fire prevention and road building programmes, and the expansion of our petroleum and mining industries. **By 1970 B.C.'s total mines production is expected to jump from the present 64,000 tons a day to over 130,000 tons a day — more than double the output!** An impressive rate of growth is also being recorded in the petroleum industry. Distribution of B.C. natural gas in Washington, Idaho and Oregon will add \$2 billion to the Provincial economy over the next 25 years. Reserves of natural gas are growing at a rate of one trillion cubic feet a year and may eventually exceed a total reserve of more than 90 trillion cubic feet. Encouraged by Social Credit policies of expansion and development, the oil and gas industry is spending \$20 million a year to find new reserves.

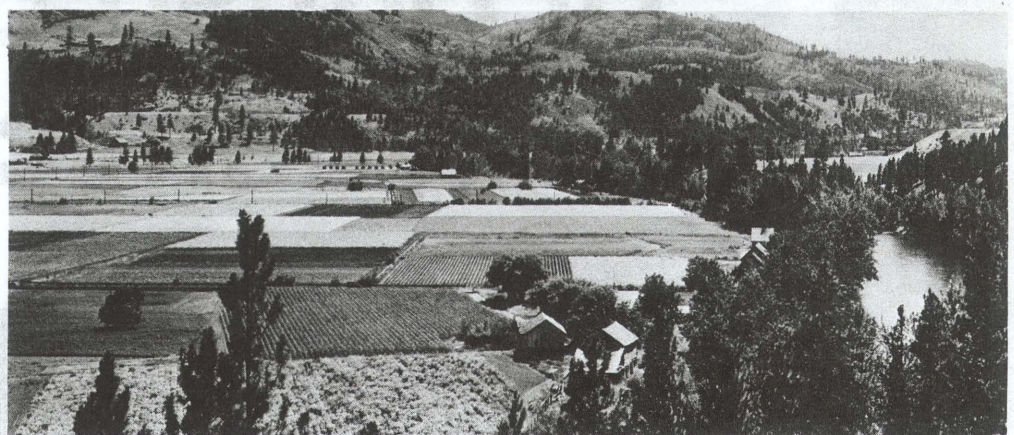
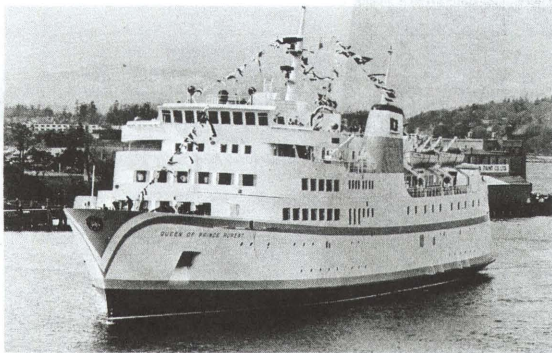




HIGHWAYS

During the past 14 years, your Social Credit Government has carried out the largest highway, bridge and tunnel construction programme in Provincial history. By linking the far-flung cities of the Province with roads that meet the world's highest standards, this great system plays a vital role in the development of every field of industry and has spurred the rapid growth of every part of the Province. Over the next seven years, your Social Credit Government will continue this great programme—building, reconstructing and improving more than 5,000 miles of highways into a transportation network that, for the size of the area it covers, will be unequalled **anywhere** in the world.

THE WORLD'S LARGEST FERRY FLEET: To weld the Mainland, Vancouver Island and the Gulf Islands into a major economic unit, the Social Credit Government operates the world's largest and most modern fleet of car ferries. This highly successful service is a vital link in British Columbia's expanding system of highways and has been an important factor in the remarkable growth of tourism. Plans are now under way for further enlargement and modernization of the fleet, which, since its inception in 1960, will have carried 6,800,000 vehicles and 18,180,000 passengers to the end of this fiscal year.



AGRICULTURE

Since 1952, farm cash income in British Columbia has increased by 50% to a total of \$156,486,000, and is forecast by your Social Credit Government to increase at least 20% by 1970. **This year your Government's expenditure on lands, settlement, and agriculture will total \$8,931,000 — up 229% over 1952!** This provides for the administration and development of Crown lands and essential services to the agriculture industry. In the past 14 years, the Government has cleared and brought into production under Provincial land-clearing assistance more than 117,400 acres.

FORWARD WITH SOCIAL CREDIT

