

OUR PRINCIPLES

The fresh leadership of Pat Binns offers Islanders more than a better alternative for the future. It offers them a leader and a team that believes that no mandate can be carried out without a plan of action. Our plan is built on a set of guiding principles to which we are committed.

PARTNERSHIP

Effective government is based on a true partnership between the Government and those who elect it. Over the last ten years, Islanders have been shut out of the decision making process on vital issues including health care and education. Input will not only be welcome, it will be actively sought.

Our partnership will be built on openness, respect and trust.

FAIRNESS

It's a principle that has been lost by a tired Government that has abandoned seniors, broken contracts, shut-out our youth, ignored our workers and misused the tendering process.

A PC Government will re-establish fairness as a fundamental in its partnership with Islanders.

FISCAL RESPONSIBILITY

An accumulated debt of one billion dollars robs our province of \$120 million dollars in interest payments every year. This seriously limits Government's ability to ensure the quality and scope of services that Islanders are entitled to.

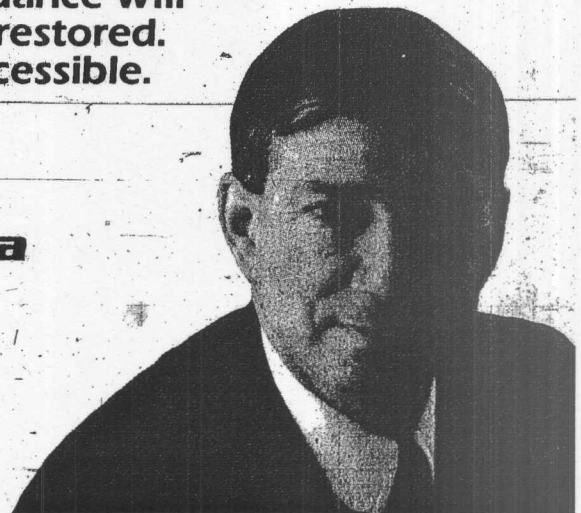
A PC Government will exercise a high level of fiscal responsibility to assure Islanders the highest return for their tax dollar. Our budget will reflect your priorities.

ACCOUNTABILITY

Islanders are frustrated with a Government that is difficult to access, out-of-touch and non-responsive.

A PC Team, lead by Pat Binns, will make the Legislative Assembly the focal point of decision making and public accountability. There will be open votes. Regular attendance will be required, and House decorum will be restored. Your PC member will be available and accessible.

**It's time for a change and a
New Partnership.
Vote for Pat Binns
and his PC Team.**



24 p. A10

OUR BLUEPRINT IS READY

"We listened to Islanders, and with their input we have developed a blueprint for a new partnership."

- Pat Binns.

Pat Binns and his PC Team have identified the principles and priorities that will be the foundation of a PC Government.

Our Blueprint is based on principles:

- Fairness
- Partnership
- Accountability
- Fiscal Responsibility

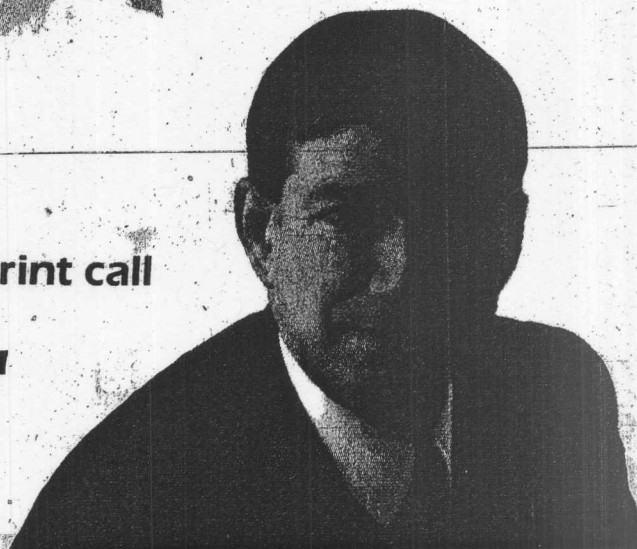
.. and addresses priorities:

- Jobs
- Education
- Health Care
- Communities

For your copy of the Blueprint call
1-800-576-8679.

**It's time for a change and
a New Partnership.
Vote Pat Binns and
his PC Team.**

A New Partnership



FOR THE 12,000 UNEMPLOYED ISLANDERS...

**who are being hurt by the present
Government, Pat Binns offers fresh
leadership and a new partnership.**

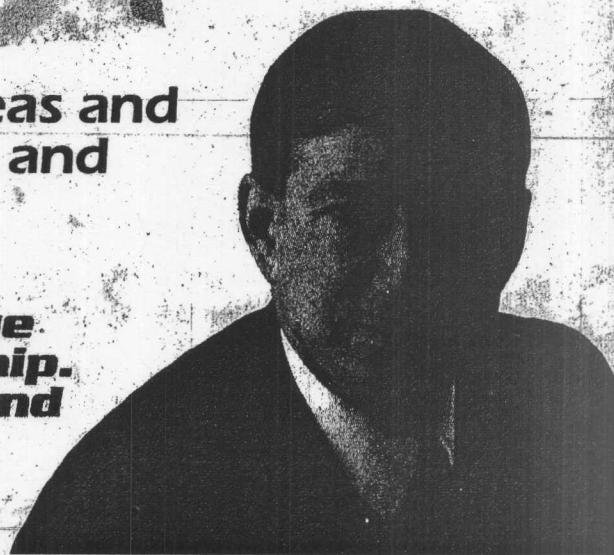
**Government changes to unemployment
insurance are having a devastating impact
on Island workers, businesses and
communities.**

**Pat Binns will stand up for
Islanders.**

**Pat Binns has the ideas and
the people to create and
protect jobs.**

**It's time for a change
and a New Partnership.
Vote for Pat Binns and
his PC Team.**

A New Partnership



26 p. A12

OUR PRIORITIES

Government must have priorities in order to create a framework in which issues and challenges can be considered and decisions made. Jobs, education, health care and communities are priorities for a PC Government.

JOBS

Small business is creating 50 percent of the new jobs across Canada. We will build and expand the link with Island businesses to create new jobs across the province.

The skill level of our workforce will be a key factor in our ability to make our job creation ideas succeed. A PC Government will initiate flexible training programs designed to meet the changing needs of Island businesses.

EDUCATION

Schools will not be closed. A PC Government will form a partnership with our educators to upgrade our education programs, particularly in the area of technology. We will commit to making the capital improvements necessary to provide high quality schools. We will focus our education system on preparing students for the challenges of tomorrow.

A PC Government will make post-secondary education a priority to prepare our young people for the demands of the twenty first century.

our young people for the demands of the twenty first century.

HEALTH CARE

Immediate corrective action is required in health care. A PC Administration will redirect Government resources to give the highest level of service to Islanders and reduce the cost of administration. Our existing hospitals will remain open.

A PC Government will form a partnership with those involved in health care to ensure that their concerns and ideas are heard.

COMMUNITIES

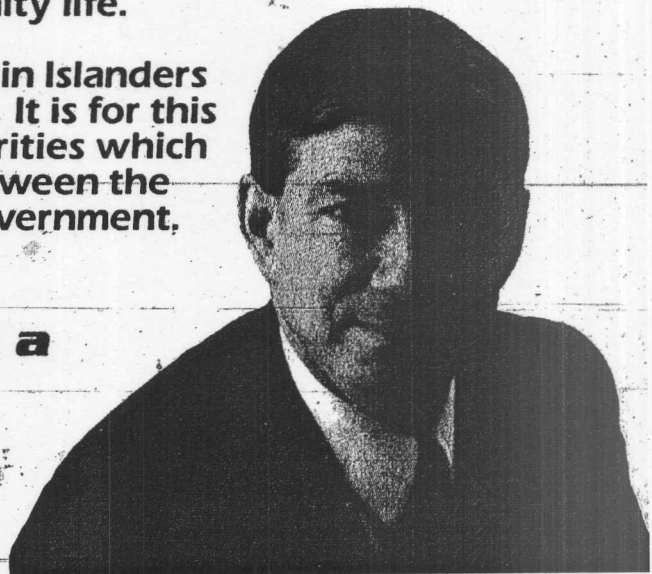
Prince Edward Island's strength is tied directly to the strength of the communities that make up our Province. Communities have the potential to offer new opportunities and to be vibrant places to live, work and raise a family.

A PC Government will work in partnership with communities to support and foster Prince Edward Island's community life.

The Pat Binns PC Team has complete faith in Islanders to meet the challenges that are before us. It is for this reason that we have identified these priorities which will be the basis of a new partnership between the people of Prince Edward Island and its Government.

**It's time for a change and a
New Partnership.
Vote for Pat Binns
and his PC Team.**

A New Partnership



PARTNERSHIP FOR HEALTHCARE

Islanders have witnessed massive cutbacks in healthcare by a Government that has mishandled priorities.

"Our healthcare must be placed beyond the reach of 'cut and slash' programs."

Pat Binns

A PC administration will not compromise on this important issue. Pat Binns and his PC Team will keep these commitments.

We will...

...amalgamate the present Department of Health with the PEI Health Services Agency to redirect more resources to patient care.

...Invest three million dollars to improve and expand Radiation and Oncology Services to treat cancer on Prince Edward Island to meet the needs of affected Islanders and their families.

...Establish a Seniors Advisory Council and change the drug assistance plan to permit three month refill periods.

...maintain existing hospitals across the Island to provide acute care services at the community level. Home care services will be expanded.

...improve upon emergency response services

the PEI Health Services Agency to redirect more resources to patient care.

...Invest three million dollars to improve and expand **Radiation and Oncology Services** to treat cancer on Prince Edward Island to meet the needs of affected Islanders and their families.

...Establish a **Seniors Advisory Council** and change the drug assistance plan to permit **three month refill periods**.

...maintain **existing hospitals** across the Island to provide acute care services at the community level. Home care services will be expanded.

...improve upon **emergency response services**

...reassign **responsibility for correctional services** to the Department of Justice from the Health and Community Services Agency.

...immediately introduce a **New Medical Act** to ensure safe and appropriate doctor-patient relationships.

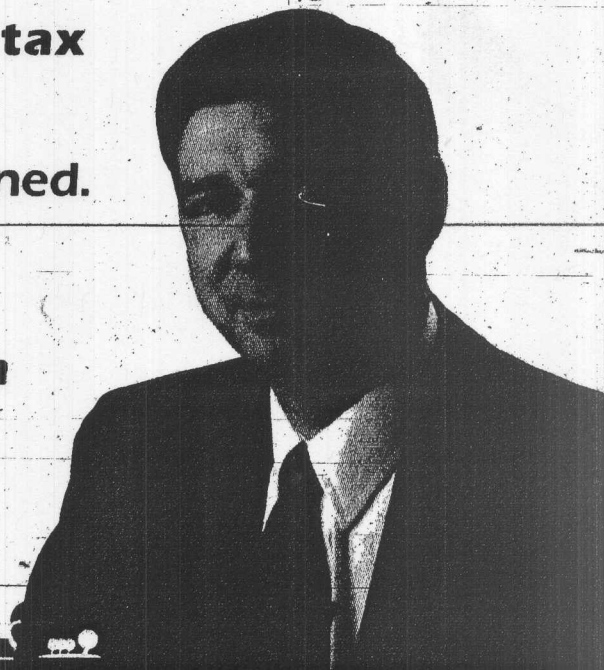
...eliminate the callback on the **GST tax credit** for low income Islanders

Quality healthcare must be maintained.

It's time...

**It's time for a change and a
New Partnership.
Vote for Pat Binns
and his PC Team.**

A New Partnership



FOR THE 11,191 LOW INCOME ISLANDERS...

...who have been hurt by the present Government. Pat Binns offers fresh leadership and a New Partnership.

Since 1990, the Callbeck/Milligan Government has clawed the GST credit from Islanders least able to afford it.

Pat Binns will eliminate this injustice and allow low income Islanders to have the full benefit of this credit.

**It's time for a change and a New Partnership.
Vote Pat Binns and his PC Team.**

A New Partnership



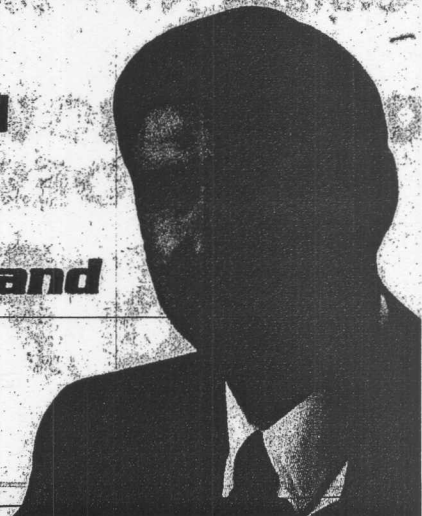
FOR ISLAND CANCER PATIENTS...

**...who must leave home for medical
treatment. Binns offers fresh
leadership.**

**We will recognize the patient's need for
quality care and compassion. Family and
community are an important part of the
care giving team. Pat Binns
and his PC Team will
expand cancer treatment
facilities on Prince Edward
Island.**

**It's time for a change and
a New Partnership.
Vote Pat Binns and
his PC Team.**

A New Partnership



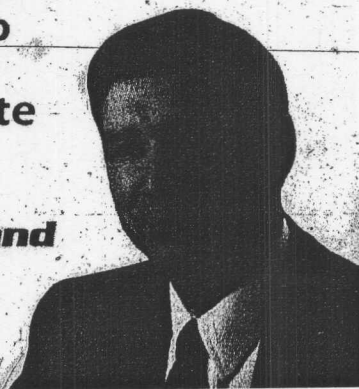
FOR THE 9,860 SMALL BUSINESS OWNERS...

**...who have been hurt by the present
Government. Pat Binns offers fresh
leadership.**

**The Callbeck/Milligan Government has
given special treatment to big business.**

**Pat Binns and his PC Team
will give fair treatment to
small businesses to meet
new challenges and create
new jobs.**

**It's time for a change and
a New Partnership.
Vote Pat Binns and
his PC Team.**



1 Special Insert p.2

OUR PRIORITIES

Government must have priorities in order to create a framework in which issues and challenges can be considered and decisions made. Jobs, education, health care and communities are priorities for a PC Government.

JOBS

Small business is creating 85 percent of the new jobs across Canada. We will build a new partnership with Island businesses to create new jobs across the province.

The skill level of our workforce will be a key factor in our ability to make our job creation ideas succeed. A PC Government will initiate flexible training programs designed to meet the changing needs of Island businesses.

EDUCATION

Schools will not be closed. A PC Government will form a partnership with our educators to upgrade our education programs, particularly in the area of technology. We will commit to making the capital improvements necessary to provide high quality schools. We will focus our education system on preparing students for the challenges of tomorrow.

HEALTH CARE

Immediate corrective action is required in health care. A PC Administration will redirect Government resources to give the highest level of service to Islanders and reduce the cost of administration. Our existing hospitals will remain open and provide acute care.

A PC Government will form a partnership with those involved in health care to ensure that their concerns and ideas are heard.

COMMUNITIES

Prince Edward Island's strength is tied directly to the strength of the communities that make up our Province. Communities have the potential to offer new opportunities and to be vibrant places to live, work and raise a family.

A PC Government will work in partnership with communities to support and foster Prince Edward Island's community life.

The Pat Binns PC Team has complete faith in Islanders to meet the challenges that are before us. It is for this reason that we have identified these priorities which will be the basis of a new partnership between the people of Prince Edward Island and its Government.

2 p. A12

JOB CREATION

Pat Binns and his PC Team are committed to job creation.

Real job creation comes from a belief in our small businesses. Our job creation initiative will be a New Partnership between workers, businesses and Government.

We will..

..protect and expand Retail and Service Sector Jobs with a non-harmonized and independent tax policy.

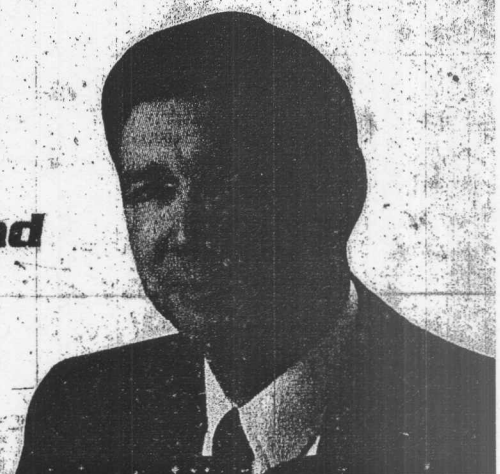
..place the important initiative of Business Prospecting under the direct authority of the Premier.

..establish a Technology Centre of Excellence to equip our youth and workforce to take advantage of cutting edge jobs and business opportunities.

..establish a Small Business Development Fund to provide loans at 3% to new and expanding small businesses to create new jobs.

**It's time for a change and
a New Partnership.
Vote Pat Binns and
his PC Team.**

A New Partnership



4 p. A8

FOR ISLAND WORKERS...

... who have seen more than their share of lay-offs and unemployment. Pat Binns offers fresh leadership

OUR TEN POINT PLAN

We will...

- ... not harmonize the GST and PST. We will use our independent tax policy to create and protect jobs.
- ... focus Government resources on small and medium sized Island businesses to create new jobs.
- ... give job creation top priority by placing business prospects under the direct authority of the Premier..
- ... create the PEI Progress Fund and expand the Equity Investor Program in Agriculture and Tourism.
- ... establish a Technology Centre of Excellence to equip our youth and workforce to access new technological job opportunities.
- ... work with tourism operators to take advantage of opportunities created by the completion of the Confederation Bridge.
- ... partner with the Island businesses to develop new value added initiatives in processing, packaging and marketing our food products.
- ... expand our training industry in our Province to create jobs and improve the skills of our workforce.
- ... ensure that our new job creation initiatives will be shared by our communities across the Island.
- ... create a small business development fund to provide loans at 3% to Island businesses.

FOR LOW INCOME AND FIXED INCOME ISLANDERS...

**...who have been hurt by the present government,
Pat Binns offers fresh leadership.**

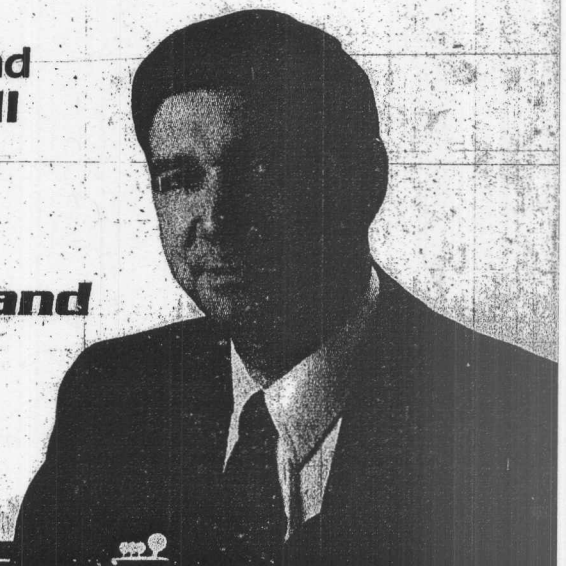
**The decision to clawback the GST rebate from those
least able to afford it has cost these families an average
of \$480.00 per year.**

**The elimination of the three month refill period in
the Drug Assistance Program has cost each senior
citizen an average of \$262.00 per year.**

**Pat Binns and his PC team will
restore GST rebate benefits and
reinstate the three month refill
period in the Drug Assistance
Program.**

**It's time for a change and
a New Partnership.
Vote Pat Binns and
his PC Team.**

A New Partnership



8 p. 48

FOR THE 8,670 FARM FAMILY MEMBERS ...

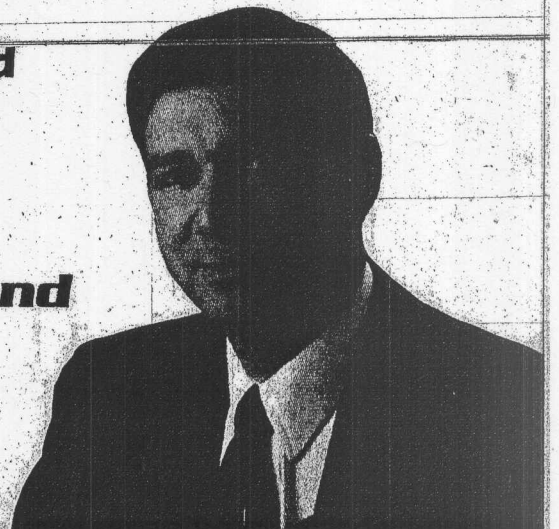
...who are concerned about the future of agriculture in our Province. Pat Binns offers fresh leadership.

Island farm families are concerned about land. The current Government has not provided the leadership necessary to ensure that this valuable resource is protected for Islanders.

Our role as a major food producer will be protected with policies that will recognize farm families, rural communities, environment and stewardship of the land as the cornerstones for the future of this vital industry.

It's time for a change and a New Partnership. Vote Pat Binns and his PC Team.

A New Partnership



16 p. A12

THE PRINCIPLES AND PRIORITIES...

Of our Blueprint will form the basis of the PC Plan for Partnership:

- to improve healthcare,
- to keep hospitals and schools open,
- to honour contracts,
- to stand up for Islanders,
- to create job opportunities,
- to work hard for Islanders, farmers, foresters and tourist operators,
- to be accountable to Islanders,
- to listen.

"We are on the Threshold of Change..."

While we take care of the priorities of today, it will be our responsibility to plan well for tomorrow.

We will strengthen our rural and urban communities to be vibrant places where generations of Islanders will thrive.

We will protect our environment.

We will encourage and assist our small and medium businesses to create jobs.

We will improve, expand and promote our vital industries of agriculture, the fishery, forestry and tourism.

We will strengthen our educational system at the community level.

We will make healthcare for all Islanders our number one priority.

-Pat Binns

**It's time for a change and
a New Partnership.
Vote Pat Binns and
his PC Team.
A New Partnership**

