

Prairie Manifesto Project

Jared Wesley
PhD Candidate
Department of Political Science
705 Social Sciences Building
University of Calgary
2500 University Drive NW
Calgary, Alberta T2N 1N4
phone: 1.403.220.4184
fax: 1.403.282.4773
email: jjwesley@ucalgary.ca

Province: ☐ Alberta ☐ Saskatchewan ☒ Manitoba

Party: PC Election Year: 1966

AA = Alberta Alliance
CON = Conservative Party
LP = Liberal-Progressive Party
PC = Progressive Conservative Party
SKP = Saskatchewan Party
UFM = United Farmers of Manitoba

CCF = Cooperative Commonwealth Federation
LIB = Liberal Party
NDP = New Democratic Party
SC = Social Credit
UFA = United Farmers of Alberta
WCC = Western Canadian Concept

Type of Document:

- | | |
|---------------------------------------|--|
| <input type="checkbox"/> Platform | <input type="checkbox"/> Constitution |
| <input type="checkbox"/> Speech | <input checked="" type="checkbox"/> Brochure / Leaflet |
| <input type="checkbox"/> Newspaper | <input type="checkbox"/> Advertisement |
| <input type="checkbox"/> Other: _____ | |

Date Collected: 2006 / 07 / 18
 YYYY MM DD

Source: Glenbow (M1744/104)

AB = Alberta
SK = Saskatchewan
MB = Manitoba

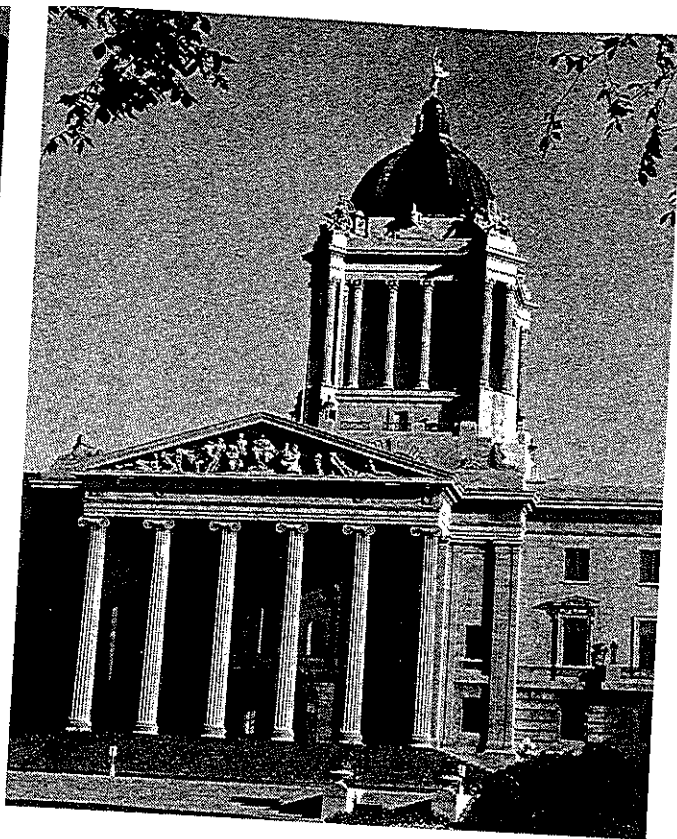
UofA = University of Alberta
UofC = University of Calgary
UofR = University of Regina
UofS = University of Saskatchewan
UofM = University of Manitoba
BU = Brandon University

PARC = Provincial Archives
LEG = Legislative Library
SPC = Special Collections
ULIB = University Library

Leadership means Good Government



Manitoba Moves Ahead with Roblin!



A Strong Voice for a great province!

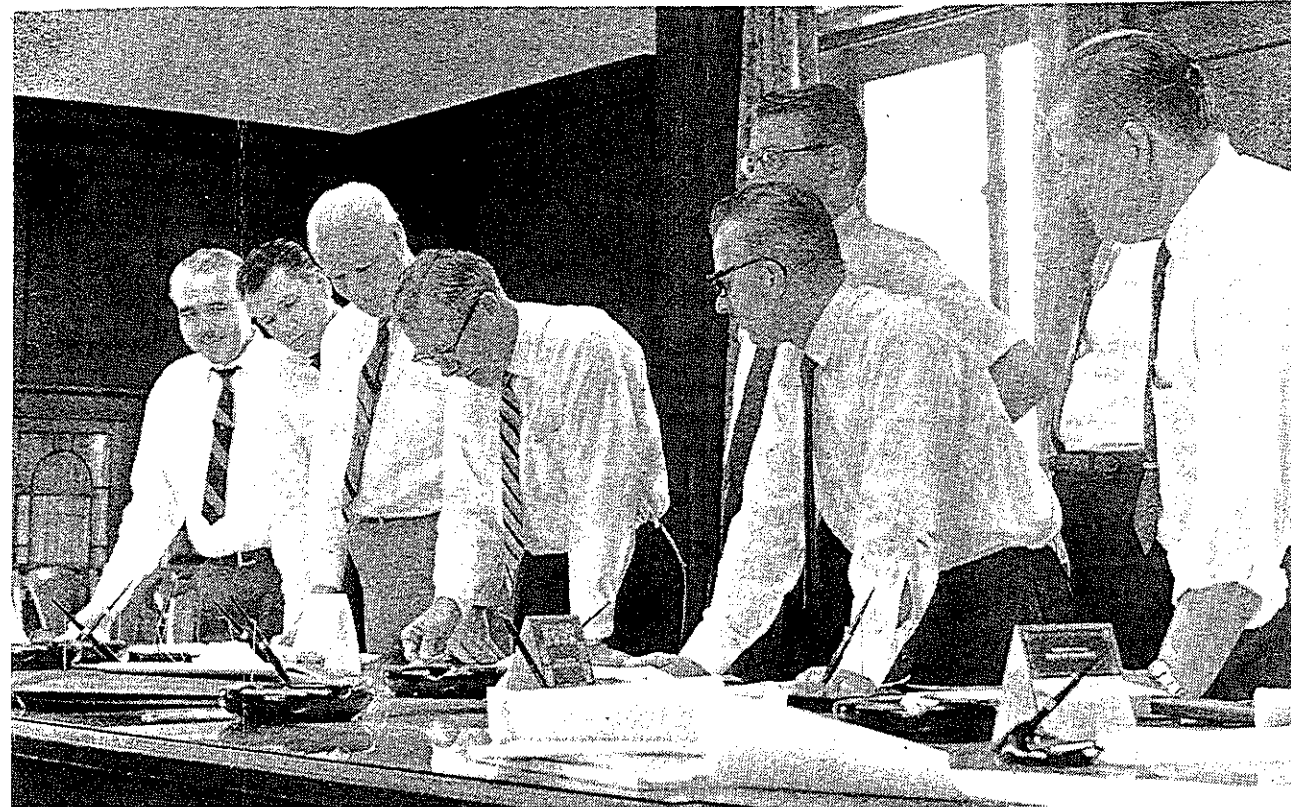
1958, the people of Manitoba called upon Duff Roblin to get their Province on the move. There was no doubt that that needed to be done.

Today, Manitoba is on the move. Employment, incomes, and opportunities are at record levels. Under Roblin, the province has created a modern education system, a twentieth century highway system, new policies for welfare and human betterment.

Leadership is vital to good government. In Duff Roblin, Manitoba has one of Canada's most able and

dynamic political leaders. At issue in this election is the issue of leadership. On June 23, the people will again decide who will speak for Manitoba, lead its government and plan its future.

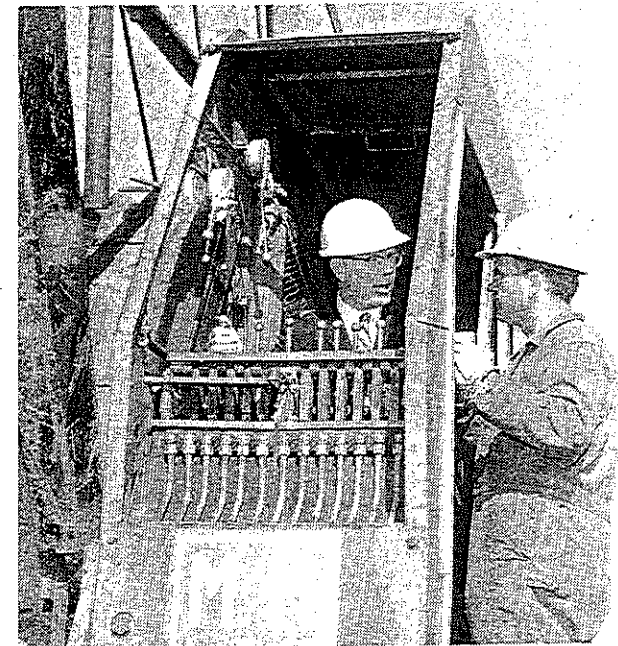
With a record of unequalled achievement, with a clear, progressive plan for the future, and with a hard-working, harmonious team, Manitobans have good reason for their confidence in the leadership of Premier Duff Roblin. Good government gets things done—and there is more to come if Manitoba is to march with the times and realize the full promise of its future.



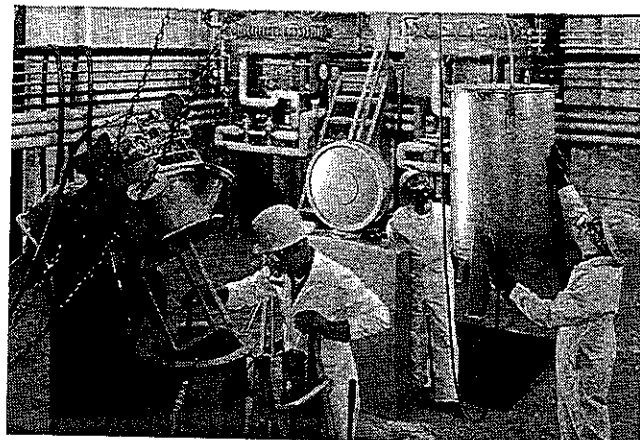
The Roblin Cabinet combines youth, experience



Duff and Mary Roblin at social gathering.



At ground-breaking ceremony for Pan-Am Games



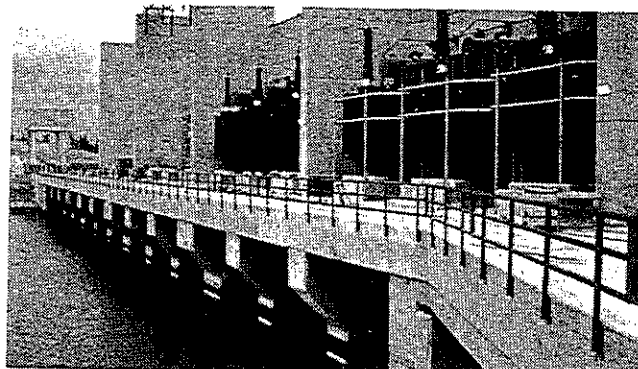
Rocket Fuel Plant — Bristol Aero-Space Ltd.



South Perimeter Cloverleaf

In just 8 years...

A working partnership of government and the people have brought great changes to Manitoba in the short span of eight years. New and better roads have been built — increasing Manitoba's hard-surfaced highway system from 1700 to 2850 miles . . . Sweeping reforms to upgrade an outdated education system: provincial government contribution increased from \$24 per person to \$86 . . . provincial support for technical schools increased from \$835,000 to \$19 millions . . . school enrollment up 29%, university student enrollment up 58%, Grade XII enrollment up 193%! . . . number of teachers increased by 30%, with an increase of 72% in teachers with university degrees . . . per capita provincial contribution to education has increased by 55% — and further assistance pledged to municipal tax-payers . . . \$61 millions have been authorized in new hospital projects . . . 4,500 new units created for elderly persons housing . . . provincial medicare program, the first in Canada, provides free medical services for the needy . . . Roblin Government introduced first Social Allowances Act in Canada . . . Since 1958, provincial expenditures in education, health, welfare and labor services have increased by 300%...prompt, decisive leadership by the Roblin Government has minimized the annual flood damages to Manitoba . . .



Transformer Bay, Grand Rapids

despite opposition complaints, the Winnipeg floodway was begun and is nearing completion . . . Manitoba's most important basic industry — agriculture — assisted by new programs: \$30 millions in loans through Farm Credit program . . . crop insurance available to 90% of Manitoba's farmers . . . \$10 millions in research in agriculture at the University . . . comprehensive water control, drainage and flood protection program...Manitoba enjoying record expansion: average annual investment in new industry in past eight years is *double* that of previous period . . . 10,000 new jobs created last year — a Manitoba record . . . U.S. tourists up 50% — triple the national average . . . northern resources, after years of neglect, now brought into productive use by new industry and development programs . . . all this and much more have been the achievements of good government, and a new spirit of confidence in the people of Manitoba!



Boissevain Collegiate



Agriculture, Manitoba's basic industry



Winnipeg General Hospital



Clear Lake

Manitoba has LOW taxes

A PER CAPITA COMPARISON OF LOCAL AND PROVINCIAL TAXES — 1965

	Ontario	Quebec	British Col.	Saskatchewan	Manitoba	Alberta
Local Taxes	\$127.81	\$ 85.40	\$ 90.85	\$108.70	\$ 91.48	\$105.00
Provincial Taxes	\$172.98	\$195.47	\$173.01	\$142.06	\$118.48	\$ 79.40
TOTAL	\$300.79	\$280.87	\$263.86	\$250.76	\$209.96	\$184.40
Sales Tax	5%	6%	5%	4%	0	0



Premier Roblin announces Government program to the press.

Much has been done... more is to come!

SOME HIGHLIGHTS OF THE CONTINUING PROGRAM FOR A GREATER MANITOBA

SCHOOL FINANCE AND EDUCATION

School tax rebates will be continued and the costs of public schools progressively transferred from the local taxpayer to senior governments . . . new two year teacher training course . . . further enriched and modernized curriculum, expanded use of television and visual aids . . . full provincial grants for kindergarten classes beginning this year . . . special grants to allow retarded and handicapped children the benefits of public school system . . . regional and vocational schools, with residential accommodation, to be constructed throughout Manitoba . . . new Institute of Industrial Arts to double technical education options . . . expanded university and technical institute bursaries to assure qualified students access to higher

education, regardless of personal means . . . establish Brandon College as a University . . . increased support for province-wide library services.

RESOURCES DEVELOPMENT

Full speed on the Nelson Development . . . create a special agency to provide maximum opportunities for Manitobans for jobs and services in this billion dollar development . . . establish Manitoba Growth Account to invest revenues from water rentals in programs to improve Manitoba economy . . . establish Manitoba export offices in selected major centres to promote trade . . . build Industrial Research and Development Park.

AGRICULTURE

Gasoline Tax refund policy for farm trucks used as a farm implement . . . crop insurance extended and expanded . . . establish an Agricultural Manpower Service to assist in locating and training farm workers . . . matching grants for seed cleaning plant construction . . . special policies to assist individual farmers in Red River flood areas in improved protection . . . expanded credit for dairy farmers . . . establish Agricultural Productivity Council to help improve productivity and farm living standards.

MANPOWER RESOURCES

Establish new Youth and Manpower Development Agency with special emphasis on youth services, upgrading present skills, and creating opportunities in new technology . . . expanded in-plant and on-the-job training, technical assistance and market research programmes.

RECREATION AND TOURISM

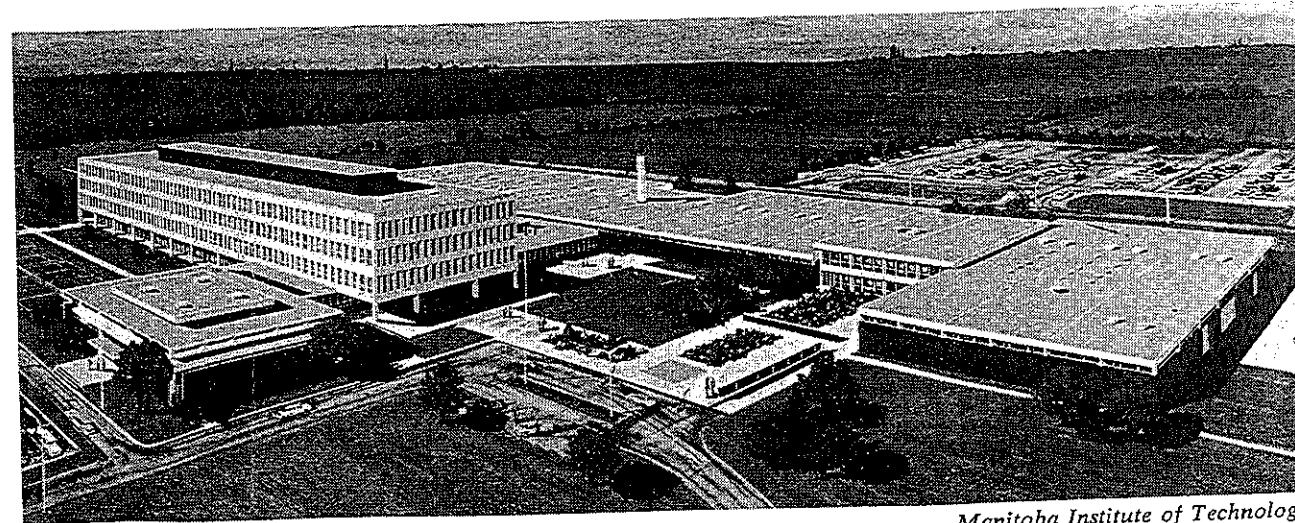
Establish new Department of Tourism and Recreation . . . expanded system of provincial parks, campsites and recreation areas . . . municipal grants for full-time recreation leaders . . . establish National Resources Research and Training Institute to improve on conservation programs.

HIGHWAYS AND COMMUNICATION

Continued road construction program, including upgrading of the 4,000 miles of municipal roads taken over by the Roblin Government; assistance to Metro in building of arterial roads, bridges and bypasses . . . new grants for local airport construction to promote small plane flying . . . expanded driver safety training program for Manitoba to include motor vehicle mechanical inspection, improved safety requirements in new cars, driver safety education in schools . . . government assisted extension of live television to northern Manitoba.

HUMAN BETTERMENT AND PUBLIC ASSISTANCE POLICIES

Establish a Consumers' Protection Bureau to safeguard interests of consumers and borrowers . . . expanded legal aid services . . . new juvenile detention home for young offenders . . . outside work release program allowing minor offenders to maintain jobs . . . medical services insurance program, with federal co-operation, in effect by July, 1967 . . . clinics for emotionally disturbed children . . . establish a Manitoba Public Housing Corporation to improve housing in all areas of the province . . . special opportunities program for Indian and Metis . . . increased allowances under the Social Allowances Act to cover increased living costs . . . increased assistance under Elderly Persons Housing Act and to Care institutions.



Manitoba Institute of Technology



*Premier Duff Roblin announces the signing
of the multi-million dollar forest
products complex at The Pas.*

The Great North: A Billion Dollars In new Opportunities for Manitobans!

The development of the Nelson River has been Duff Roblin's dream. Now it is a reality! This project, the largest of its kind in Canadian history, is underway.

It means thousands of new job opportunities . . . it means continuing low power rates for Manitobans (already the lowest of the western provinces) . . . it means a potentially profitable export industry . . . most important, it means new opportunities for enterprise and industry throughout the province, new jobs and better wages for Manitobans.

The Nelson River Development is the product of purposeful leadership and good government. It shows what sound planning and progressive policy can do for Manitoba. Already, the Roblin Government has introduced far-reaching plans to ensure that this great project brings maximum benefit to the people of this province.

Leadership means good government. Keep Manitoba moving ahead with Roblin. Support Duff Roblin's team and his program by voting Progressive Conservative on June 23.

IN SEVEN OAKS CONSTITUENCY

• *Elect* •

NURGITZ, Nathan

X

