

# Prairie Manifesto Project

Jared Wesley  
PhD Candidate

Department of Political Science  
705 Social Sciences Building  
University of Calgary  
2500 University Drive NW  
Calgary, Alberta T2N 1N4  
phone: 1.403.220.4184  
fax: 1.403.282.4773  
email: jjwesley@ucalgary.ca

Province:  Alberta  Saskatchewan  Manitoba

Party: SC Election Year: 1952

AA = Alberta Alliance  
CON = Conservative Party  
LP = Liberal-Progressive Party  
PC = Progressive Conservative Party  
SKP = Saskatchewan Party  
UFM = United Farmers of Manitoba

CCF = Cooperative Commonwealth Federation  
LIB = Liberal Party  
NDP = New Democratic Party  
SC = Social Credit  
UFA = United Farmers of Alberta  
WCC = Western Canadian Concept

Type of Document:

- Platform  Constitution  
 Speech  Brochure / Leaflet PP  
 Newspaper  Advertisement  
 Other: \_\_\_\_\_

Date Collected: 2007 / 1 / ~~01~~ 02  
YYYY MM DD

Source: RCP - 31 May, p. 2 ~ 10 June, p. 16

AB = Alberta  
SK = Saskatchewan  
MB = Manitoba

UofA = University of Alberta  
UofC = University of Calgary  
UofR = University of Regina  
UofS = University of Saskatchewan  
UofM = University of Manitoba  
BU = Brandon University

PARC = Provincial Archives  
LEG = Legislative Library  
SPC = Special Collections  
ULIB = University Library

**L.P.F. SPEARS  
CKRM-980  
"PULLING NO  
PUNCHES"**

Tuesday, June 3, 11.05 a.m. and 7.50 p.m.

Wednesday, June 4, 7.50 p.m.

Thursday, June 5, 11.05 a.m.

Friday, June 6, 11.05 a.m.

Sponsored by the Labor Progressive Party  
312 Westman Chambers, Regina

farmers who plan to buy or picture crop this spring should place their orders soon if they wish to take advantage of the special reduced prices on good alfalfa mixtures. Orders post-dated later than June 14 will not be accepted, Mr. McKenzie said. Details of the spring seeding program are available from agricultural representatives, municipal secretaries or the plant industry branch in Regina.

To date, more than 3,000 farmers have purchased seed for seeding a total acreage of 45,000 acres. The largest acreage is being seeded in southeast Saskatchewan. Total distribution this spring amounted to 75,000 pounds of alfalfa, 90,000 pounds of crested wheat grass, 175,000 pounds of bromo grass and 5,000 pounds of red canary grass.

SWIFT CURRENT, Sask. (Staff). Tentative dates for the opening of the new \$1,000,000 union hospital in Swift Current has been set for June 23, when Hon. T. J. Bentley, minister of health will attend. It had been hoped to have Federal Health Minister Paul Martin at the ceremonies, but latest word is that he will be unable to be in Swift Current at this time.

Persons attending the opening will be able to make a tour of the new building.

At the present time, work of moving the various departments into the new building is in progress. The laundry has been operating for some time. The laboratory has been moved and a pharmacy has been established in the hospital, and transfer of all the medical records from the old to the new hospital is being made this week. The kitchen and cafeteria was to be moved by Friday.

On the outside, work of landscaping of the grounds has commenced. Numerous trees will have to be taken out of their present location to make this work possible, it was learned.

**Weyburn fire school over**

WEYBURN (Staff). Instructors from the fire commissioners office who conducted a fire training and prevention school here for three days, Thursday evening expressed their appreciation and thanks to the Weyburn fire brigade for the co-operation received during the school.

The first school here was the first of a series being conducted throughout the province.

On Thursday the volunteer fire-fighters were shown movies of practical training on fire ventilation. A film was also shown on the United States Navy fire-fighting techniques.

Practical training was conducted with fire apparatus, rope work, hose drills, ladder drills, and proper use of extinguishers and axes.

**Police probing robbery attempt**

WEYBURN, Sask. (Staff).—An unsuccessful attempt to force the safe in the Goodwater post office was made sometime Thursday night it was learned here Friday. According to reports entry to the post office building was made through a door.

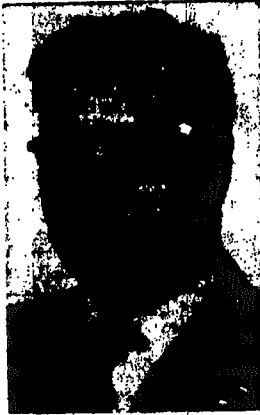
Dial of the safe was knocked off and an attempt was made to chisel the hinges off. As far as could be determined nothing was taken from the building. Weyburn R.C.M.P. are investigating.

**UNITE THE WEST  
VOTE  
SOCIAL CREDIT**

**REGINA CANDIDATES**



W. C. GAMELIN



NICK IANNONE



A. E. KOVATCH

The Social Credit party which these men represent and to whose policies they have pledged themselves, believe in four basic principles:

1. That the individual is the most important of all God's creation on this earth.
2. That the major function of any government is to bring to people the results which the people want in the management of their affairs.
3. That security is not enough — we must have freedom with security.
4. That which is physically possible and desirable can and must be made financially possible.

SPONSORED BY REGINA SOCIAL CREDIT GROUP

Th  
570  
**WE**

THE

**NO**

**VOTE**

Quotations	Quotations	Quotations	Quotations
Acadia Uranium 1.25	Gold Lake 1.25	Quotations 1.25	Quotations 1.25
Alkatcho 1.25	Gold Lake 1.25	Quotations 1.25	Quotations 1.25
Amal. Larder 1.18	Golden Manitou 6.30	Quotations 1.25	Quotations 1.25
Ann. Yellowknife 4.48	Hardrock 1.17	Quotations 1.25	Quotations 1.25
Anglo Lead 2.80	Hecla 1.17	Quotations 1.25	Quotations 1.25
Anglo Uranium 12.00	Homer 1.17	Quotations 1.25	Quotations 1.25
Asuncion 1.15	Imperial 1.17	Quotations 1.25	Quotations 1.25
Asuncion 1.15	Imperial 1.17	Quotations 1.25	Quotations 1.25
Asuncion 1.15	Imperial 1.17	Quotations 1.25	Quotations 1.25

Quotations	Quotations	Quotations	Quotations
Asuncion 1.15	Imperial 1.17	Quotations 1.25	Quotations 1.25
Asuncion 1.15	Imperial 1.17	Quotations 1.25	Quotations 1.25
Asuncion 1.15	Imperial 1.17	Quotations 1.25	Quotations 1.25
Asuncion 1.15	Imperial 1.17	Quotations 1.25	Quotations 1.25



Travel comfort that doubles holiday pleasures... wherever you go in the beautiful provinces of Eastern Canada... visiting the great cities... the popular summer resorts... rolling farmlands... quaint fishing villages dotting the Atlantic shore. You'll find they're all so close to reach by Canadian National.

Stop-over wherever you wish.

For Any Gift Occasion  
Canadian National now offers an attractive Gift Certificate covering Train Travel anywhere to any rail destination for any amount you wish on sale at all Canadian National ticket offices. Easy to buy, easy to use. A gift that's sure to please.

Agents for ALL Steamship Lines

ENQUIRY:

Depot Ticket Office, Phone 7613

CANADIAN NATIONAL

## Profits taken

MONTREAL, June 10 (CP). — Profit-taking pulled prices back from their high near the close Tuesday on the stock exchange and curb market. There were no wide movements. Utilities held early strength and beverages, senior metals and steels were up slightly. Papers continued lower followed by senior oils, banks and carriers. Miscellaneous industrials were higher. Higher were Ogilvie, Shawinigan, Walker, Consolidated Smelters, McColl-Frontenac, Massey-Harris and Dominion Bridge. Easier were C.P.R., Bank of Montreal, International Petroleum, B.A. Oil, International Paper and Abitibi.

## Canadian industrials

(By James Richardson and Sons) Tuesday, June 10

Quotations	Quotations	Quotations	Quotations
abiti 14.25	Dom. T. & C. pfd. 19.50	Pace Heavy 24.00	Powell H. Pup 24.00
abiti pfd 25.12	Dom. Textile 11.00	Powder Corp. 30.75	Russell Intus 20.75
adco 16.50	Easton Steel 6.00	Shawinigan 42.37	Sheas Wpg Brew 15.50
Algonia Steel 45.00	Eddy Paper 2.00	Sheas Wpg Br B 28.00	Sheas Breweries 18.00
aluminum 101.00	Fam. Play. Can. 15.50	St. Lawrence 34.25	Steel Co. 31.00
aluminum B 17.00	Fanny Farmer 24.12	St. Lawrence pfd 33.50	St. Lawrence Corp. B 39.75
Atlas Steel 21.75	Federal Grain 21.75	Stand. Baving 13.50	Stand. Pav. pfd. 25.25
athurst A 43.00	Fed. Grain pfd. 23.50	Superlat Pete 14.75	Tay. Pear. & Car. 6.87
athurst B 7.50	Foundation Co. 12.00	Taylor Tailors 19.00	Trad. Fin. A 34.75
ell Telephone 35.87	Fond of Can. A 56.50	United Corp. B 39.75	United Fuel B 52.50
razilian 10.12	Fraser Cornery 15.50	United Gas 22.00	United Steel 22.00
C. Power A 32.00	Gr. West Coal A 11.25	Western Prods 21.85	Western Can. Br. 16.00
C. Power B 7.25	Gatineau Power 11.37	Western Grocers 44.00	Weston Ltd. 21.00
crow Co. 12.12	Gen. Stears 36.00	Wpg. Elec. 25.75	Wpg. Elec. pfd. 85.00
urns & Co. A 40.37	Gr. Lakes Paper 16.32	Zellers Ltd. 14.00	Banks 26.50
urns & Co. B 28.82	Gyp. Lime & Ala. 20.50	Commerce 26.50	Dominion 28.00
A. Oil 31.00	Gr. West Coal B 11.30	Imperial 39.50	Montreal 28.25
uilding Prods. 7.50	Hiram Walker 43.75	Nova Scotia 37.00	Royal 28.00
urard Dry Dock 12.50	Imperial Oil 35.25	Toronto 29.68	Mutual Funds
an. Cement 41.50	Imperial Pfd. 42.50	Can. Inv. F. Bid 4.16	Askd 4.76
an. & Dom. Sug. 17.25	Indus. Accept. 43.37	Res. of Can. 3.92	Askd 6.31
an. Packers A 33.00	Int. Nickel 45.25	Common Int. 3.08	Askd 3.58
an. Steamships 60.00	Int. Paper 45.25	Levi Fund 7.73	Askd 4.16
an. Steam. pfd. 45.00	Int. Utilities 27.00	Sal. Mutual 16.08	Askd 17.87
an. Breweries 16.25	Kelvinator 14.87		
an. Car & Edry. 12.00	Labatt 15.50		
an. Food Prods. 27.5	Lake of the Woods 30.00		
an. Colanese 41.50	Lablaw A 30.00		
an. Cannera 20.25	Lablaw B 30.00		
an. C. & F. A. 15.00	Lobby A 11.50		
an. Colanese 41.50	J. A. Lang & Co. 11.50		
an. Cannera 20.25	Maple Leaf Mig. 8.25		
an. Food Prods. 27.5	McCull. Front. 35.50		
an. Marconi 3.15	Mercury Mills 2.00		
an. Pac. Riv. 35.00	Mint. & Cont. Pap. 16.12		
an. Victoria 17.00	Moore Corp. 23.50		
an. West Lbr. 6.00	H. R. MacMill. B 18.50		
an. Wire-B. Box 38.25	Nat. Drug pfd. 19.75		
ackhead Flow 11.00	Nat. Grocers 14.00		
ns. Min. & Sm. 34.75	Nat. Steel Car 25.75		
ns. Paper 34.75	North Star Oil 7.00		
ns. P. Dis. B 9.75	Ogilvie Flour 5.80		
ns. Breweries 12.00	Orange Crush 3.80		
ns. Seagrams 23.50			
ns. Bridge 71.50			
ns. Stores 11.00			
ns. Steel 18.00			
ns. Tar & Chem. 38.50			

## Unlisted mines

(By James Richardson and Sons) Tuesday, June 10

Quotations	Quotations	Quotations	Quotations
dvance 0.04	Glencona 0.08	New Aug. 0.10	Nickel L. 0.10
malg. Kirk. 0.04	Grand Chib. 1.80	Norbeau 0.10	Norbec 0.15
rolic 0.04	Hornfaut 0.15	Oklend 0.08	Pascalls 0.13
l Ore 0.04	Independent 0.08	Payne 0.13	Sand Mal 0.15
iroco 0.08	Ile Pine 0.20	Richgrp 0.07	Russel 0.07
imilans 0.05	Jerome 0.15	St. Lawrence 0.07	Y. David 0.10
nt. Man. 0.09	LaSalle 0.08		
ns. Chib. 0.22	Lassie 0.16		
nscho 0.18	Mate Y. K. 0.08		
ns. mbbie 0.07	Mindus 0.50		
ns. urban 0.20	Murmac 0.51		
ns. rty Four 1.02b			

## Unlisted oils

(By James Richardson and Sons) Tuesday, June 10

Bid	Asked	Bid	Asked	Bid	Asked
Blance 07	10	Can. Sup. 13.50	14.00	Old Smokey 1.25	1.30
Brook 28	47	Can. Sup. 40	42	Peak Oil 0.54	0.58
ish. Ladue 28	31	GL. Pla. D. 12.12	12.50	Westlock 0.33	0.35
it. Pete 15	18	McLeod 0.84	0.88		

**TRAIN HELD UP**  
ASMARA, Eritrea, June 10 (Reuters). — A gang of 11 bandits held up a train 25 miles from Assawa with heavy rifle fire today, killing one Eritrean and wounding two, and robbing passengers of their valuables.

**PRESS INVESTIGATION**  
NEW DELHI, June 10 (Reuters). — A press commission to investigate the workings of the press in India will be set up by the government in a few weeks, Home Minister K. N. Katju told parliament today.

## CITY BUS LINE

Stock of Prince Albert and Northern Bus Lines Limited

This Company operates The Transportation System in the City of Prince Albert.

Price—\$75,000.00


Terms can be arranged  
Prince Albert & Northern Bus Lines Limited  
12th Street West, Prince Albert, Sask.

# UNITE THE WEST


# VOTE

# SOCIAL CREDIT


## REGINA CANDIDATES



**W. C. GAMELIN**



**NICK IANNONE**



**A. E. KOVATCH**

### A VOTE FOR SOCIAL CREDIT WILL MEAN!

- Pay-as-you-go policy.
- Industrial expansion.
- Borrowing by governments must cease.
- Development of oil and other natural resources, as have been proven in Alberta, by a Social Credit government.
- Paying off our provincial indebtedness.

## A VOTE FOR SOCIAL CREDIT IS A VOTE FOR YOURSELF

SPONSORED BY REGINA SOCIAL CREDIT GROUP